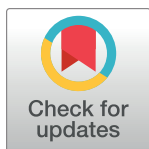


META-RESEARCH ARTICLE

Biological factors and statistical limitations prevent detection of most noncanonical proteins by mass spectrometry

Aaron Wacholder^{1,2}, Anne-Ruxandra Carvunis^{1,2*}

1 Department of Computational and Systems Biology, School of Medicine, University of Pittsburgh, Pittsburgh, Pennsylvania, United States of America, **2** Pittsburgh Center for Evolutionary Biology and Medicine, School of Medicine, University of Pittsburgh, Pittsburgh, Pennsylvania, United States of America

* anc201@pitt.edu**OPEN ACCESS**

Citation: Wacholder A, Carvunis A-R (2023) Biological factors and statistical limitations prevent detection of most noncanonical proteins by mass spectrometry. *PLoS Biol* 21(12): e3002409. <https://doi.org/10.1371/journal.pbio.3002409>

Academic Editor: Wendy V. Gilbert, Yale University, UNITED STATES

Received: March 9, 2023

Accepted: October 30, 2023

Published: December 4, 2023

Copyright: © 2023 Wacholder, Carvunis. This is an open access article distributed under the terms of the [Creative Commons Attribution License](https://creativecommons.org/licenses/by/4.0/), which permits unrestricted use, distribution, and reproduction in any medium, provided the original author and source are credited.

Data Availability Statement: All new data and code used in this study can be found on Figshare (<https://doi.org/10.6084/m9.figshare.24026367>). The mass spectrometry datasets analyzed in this study can be found at PRIDE with identifiers PXD001928 and PXD008586 and at IPROX with identifier PXD028623. The ribosome profiling and open reading frame data can be found at Figshare (<http://doi.org/10.6084/m9.figshare.22312729>).

Funding: This work was funded by the Searle Scholars Program (<https://searlescholars.org/>) to A.-R.C. and the National Institute of General

Abstract

Ribosome profiling experiments indicate pervasive translation of short open reading frames (ORFs) outside of annotated protein-coding genes. However, shotgun mass spectrometry (MS) experiments typically detect only a small fraction of the predicted protein products of this noncanonical translation. The rarity of detection could indicate that most predicted noncanonical proteins are rapidly degraded and not present in the cell; alternatively, it could reflect technical limitations. Here, we leveraged recent advances in ribosome profiling and MS to investigate the factors limiting detection of noncanonical proteins in yeast. We show that the low detection rate of noncanonical ORF products can largely be explained by small size and low translation levels and does not indicate that they are unstable or biologically insignificant. In particular, proteins encoded by evolutionarily young genes, including those with well-characterized biological roles, are too short and too lowly expressed to be detected by shotgun MS at current detection sensitivities. Additionally, we find that decoy biases can give misleading estimates of noncanonical protein false discovery rates, potentially leading to false detections. After accounting for these issues, we found strong evidence for 4 noncanonical proteins in MS data, which were also supported by evolution and translation data. These results illustrate the power of MS to validate unannotated genes predicted by ribosome profiling, but also its substantial limitations in finding many biologically relevant lowly expressed proteins.

Introduction

Ribosome profiling (ribo-seq) experiments indicate that genomes are pervasively translated outside of annotated coding sequences [1]. This “noncanonical” translome primarily consists of small open reading frames (ORFs), located on the UTRs of annotated protein-coding genes or on separate transcripts, which potentially encode thousands of small proteins missing from protein databases [2]. Several previously unannotated translated ORFs identified by ribo-seq have been shown to encode microproteins that play important cellular roles [3–6]. The number of translated noncanonical ORFs identified by ribo-seq analyses is typically very large, but

Medical Sciences of the National Institutes of Health (<https://www.nigms.nih.gov/>) grant DP2GM137422 (awarded to A.-R.C.). The funders had no role in study design, data collection and analysis, decision to publish, or preparation of the manuscript.

Competing interests: A.-R.C. is a member of the scientific advisory board for Flagship Labs 69, Inc (ProFound Therapeutics).

Abbreviations: FDR, false discovery rate; MS, mass spectrometry; ORF, open reading frame; PSM, peptide-spectrum match; SGD, Saccharomyces Genome Database.

many are weakly expressed, poorly conserved [7–9], and not reproduced between studies [10], suggesting that they may not all encode functional proteins. There has thus been considerable interest in proteomic detection of the predicted products of noncanonical ORFs [11–15].

Detection of a noncanonical ORF product by mass spectrometry (MS) confirms that the ORF can generate a stable protein that is present in the cell at detectable concentrations and thus might be a good candidate for future characterization.

Over the past decade, numerous studies have attempted to identify noncanonical proteins using bottom-up “shotgun” proteomics in which MS/MS spectra from a digested protein sample are matched to predicted spectra from a protein database [16,17]. These studies report hundreds of peptides encoded by noncanonical ORFs with evidence of detection in MS data [13–15,18–20]. However, these detections typically represent only a small fraction of the noncanonical ORFs found to be translated using ribo-seq. It is unclear whether most proteins translated from noncanonical ORFs are undetected by MS because they are absent from the cell, for example, owing to rapid degradation, or because they are technically difficult to detect. Both the short sequence length and low abundance of noncanonical ORFs pose major challenges for detection in typical bottom-up MS analysis [17].

Even given the low rates of detection of noncanonical proteins predicted by ribo-seq, there are suggestions [21,22] that some of these claimed detections may be false positives, and true noncanonical detections even rarer. In particular, several practices in the statistical analysis of MS data might inflate the apparent number of confident noncanonical detections. Confidence is typically obtained in an MS analysis by controlling the false discovery rate (FDR; the expected proportion of inferred detected proteins that are incorrect). FDR is usually estimated using a target-decoy approach, in which a set of proteins expected not to exist in the sample (“decoys”) are included in the sequence database along with predicted proteins (“targets”) [23]. As no decoys should be genuinely detected, the rate of inferred detection of decoys indicates the rate of false detections of targets. It is common to control FDR across the full proteome at 1% such that the full list of detected proteins, including both canonical and noncanonical, contains only 1% false discoveries. However, this practice is recommended against by Nesvizhskii [24] and the Human Proteome Project [25]. A strict FDR applied proteome-wide does not impose a strong constraint on the FDR among the noncanonical subset, and so the list of noncanonical detections may still contain a large proportion of false detections. This problem is exacerbated, moreover, if researchers control FDR at 1% on multiple datasets separately and then merge the detected protein lists from each analysis. As true detections will tend to be shared between datasets while false detections will not, the FDR of the merged list is expected to be much higher than 1% [26]. These problems can be addressed by setting a strict FDR on the noncanonical proteome specifically and by analyzing all datasets together in a single analysis. An additional potential problem comes from the manner in which decoy sets are constructed. Decoy sequences need to be unbiased such that the MS analysis algorithm is just as likely to falsely claim a detection for a decoy or a target [23,27]. Commonly used decoys constructed by reversing the sequence of target proteins have been shown to be unbiased for canonical proteins [28], but it is unknown whether they are also unbiased for noncanonical proteins, and such a bias could cause incorrect estimation of FDR in either direction.

Several recent MS studies have aimed to improve detection of short, lowly expressed proteins in *Saccharomyces cerevisiae*. He and colleagues [29] used a combination of techniques to enrich for small proteins and detected 117 microproteins, including 3 translated from unannotated ORFs. Gao and colleagues [30] also used a combination of strategies to detect many small and low abundance proteins. Sun and colleagues [31] searched for unannotated microproteins in a variety of stress conditions and found 70, all expressed from alternative reading

frames of canonical coding sequences. At the same time as these studies provided increased coverage of the yeast proteome, Wacholder and colleagues [7] integrated ribo-seq data from hundreds of experiments in over 40 published studies and assembled a high-confidence yeast reference translome including 5,372 canonical protein-coding genes and over 18,000 noncanonical ORFs. Here, we leveraged these recent technical advances in MS and ribo-seq analysis to obtain a comprehensive, unbiased account of noncanonical protein detection in *S. cerevisiae* and investigate the biological and statistical factors affecting detection of noncanonical proteins.

Results

Noncanonical proteins and decoys detected at comparable rates

Using the MSFragger program [32], we searched the 3 aforementioned published MS datasets optimized for detection of short, lowly expressed proteins [29–31] against a sequence dataset that included all 5,968 canonical yeast proteins on Saccharomyces Genome Database (SGD) [33] as well as predicted proteins from 18,947 noncanonical ORFs (including both unannotated ORFs and ORFs annotated as “dubious”) inferred to be translated by Wacholder and colleagues [7] on the basis of ribosome profiling data. The peptide-spectrum matches (PSMs) identified by MSFragger from all experiments among the 3 studies were pooled. FDR was estimated either for the full list of ORFs or separately for canonical and noncanonical ORFs using a target-decoy approach [23]. In both cases, we used the MSFragger expect scores, which indicate the confidence of the algorithm in each PSMs (with lower values indicating stronger matches), to estimate FDR at the protein level (number of decoy proteins passing threshold divided by number of target proteins passing threshold). A protein or decoy was considered detected if it had at least one unique PSM passing the threshold.

Among canonical ORFs considered alone, 4,391 of 5,968 had proteins detected at a 1% FDR (Fig 1A). For noncanonical ORFs considered alone, it was not possible to generate a substantial list of detected proteins at a 1% FDR because too many decoys were detected relative to targets at all confidence thresholds (Fig 1B). When the full proteome was considered together, 4,389 proteins were found at a 1% FDR, including 4,371 canonical proteins and 18 noncanonical (Fig 1C). However, 10 noncanonical decoys also passed the 1% FDR expect score threshold, implying an estimated 56% FDR among these 18 noncanonical proteins. Thus, using a 1% proteome-wide FDR threshold, rather than a class-specific FDR strategy, results in a list of inferred noncanonical proteins of which a large fraction are false positives, as cautioned by Nesvizhskii [24].

Decoy bias among noncanonical ORF products leads to inaccurate FDR estimates

In general, there is a trade-off in target-decoy approaches such that setting a weaker confidence threshold results in a longer list of proteins inferred as detected, but with a higher FDR. In the case of yeast noncanonical proteins, the decoy/target ratio never went below 60% for any list of inferred detected target proteins larger than 10, and this ratio also did not converge to 1 even with thresholds set to allow 10,000 target proteins to pass (Fig 2A). The small enrichment of targets above decoys gives little confidence in detection of noncanonical ORF products at the level of individual proteins but leaves open the possibility that MS data could contain a weak biological signal.

However, there is an alternative explanation for why targets are found at somewhat higher rates than decoys across a large range of confidence thresholds: decoy bias [23]. The accuracy

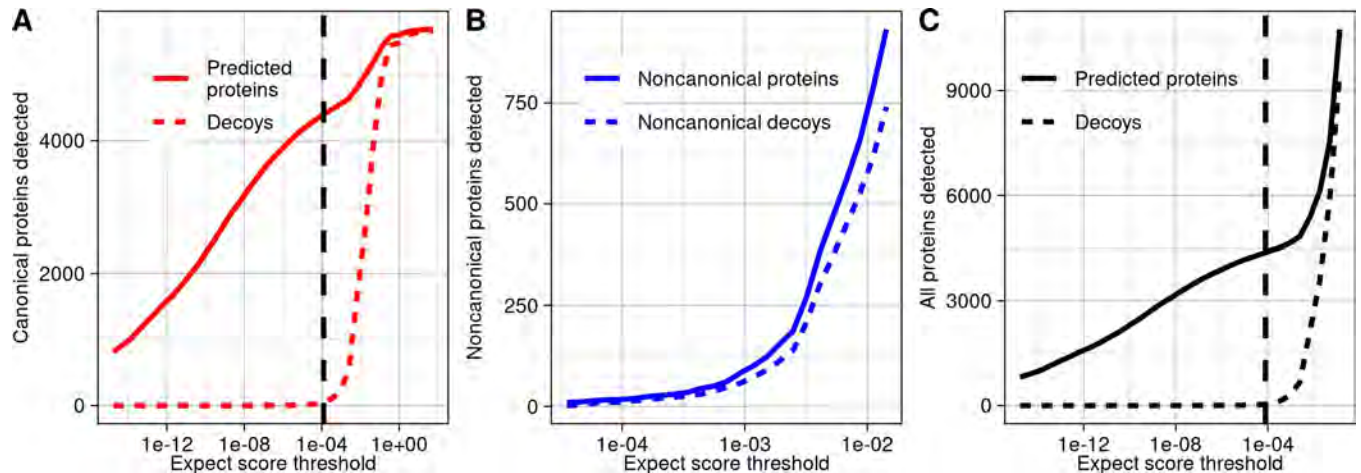


Fig 1. Few noncanonical proteins are confidently detected in MS data. (A) The number of predicted proteins and decoys detected in MS data at a range of confidence thresholds among canonical yeast proteins. The dashed line signifies the 1% FDR threshold among canonical proteins. (B) The number of predicted noncanonical proteins and decoys detected in MS data at a range of confidence thresholds. (C) The number of predicted proteins and decoys detected in MS data at a range of confidence thresholds, considering noncanonical and canonical proteins together. The dashed line signifies the 1% proteome-wide FDR threshold. The data underlying this Figure can be found in [S1 Data](#).

<https://doi.org/10.1371/journal.pbio.3002409.g001>

of FDR calculations require that target and decoy false positives are equally likely at any threshold, but this assumption could be violated if there are systematic differences between targets and decoys. Decoy bias has been assessed in previous work by comparing the number of target and decoy PSMs below the top rank for each spectra: If a peptide is genuinely detected, it will usually be the best match to its spectra, and so lower-ranked matched peptides will be false and should appear at approximately equal numbers for both targets and decoys [23]. Among canonical ORFs, this expected pattern is observed (Fig 2B). In contrast, targets substantially outnumber decoys at all ranks for noncanonical ORFs (Fig 2C). We reasoned that this bias could be explained by the short length of noncanonical proteins. Indeed, many predicted peptides derived from noncanonical ORFs include the starting methionine, while decoys, consisting of reversed sequences from the protein database, are more likely to end with methionine (Fig 2D). To eliminate this large systematic difference, we constructed an alternative decoy database in which decoys for noncanonical proteins were reversed only after the leading methionine. When this database is used, the number of noncanonical targets and decoys at each rank is close to equal (Fig 2E), and the target/decoy ratio converges to one as confidence thresholds are lowered (Fig 2F). This behavior is consistent with expectations for a well-constructed decoy set. We therefore repeated our initial analysis using the alternative decoy set (Fig 2G and 2H) and used it for all subsequent analyses.

Two noncanonical proteins show strong evidence of genuine detection

Using the alternative decoy set and standard MSFragger analysis, we remained unable to construct an FDR-controlled list of noncanonical proteins at a 10% FDR threshold because decoys were still detected at a similar rate as targets (Fig 2G). We therefore sought to examine the strongest hits to determine if we could identify evidence that any were genuine detections. Two noncanonical proteins had peptides with stronger expect scores than any decoys (Fig 2H; standard MSFragger approach in Tables 1 and S1). We gave the ORFs encoding these proteins systematic names YMR106W-A and YFR035W-A following SGD conventions [33]. A YFR035W-A peptide matched to 2 distinct spectra at thresholds stronger than the best decoy match (S1 Fig). Only a single YMR106W-A peptide was found at this threshold, but 3

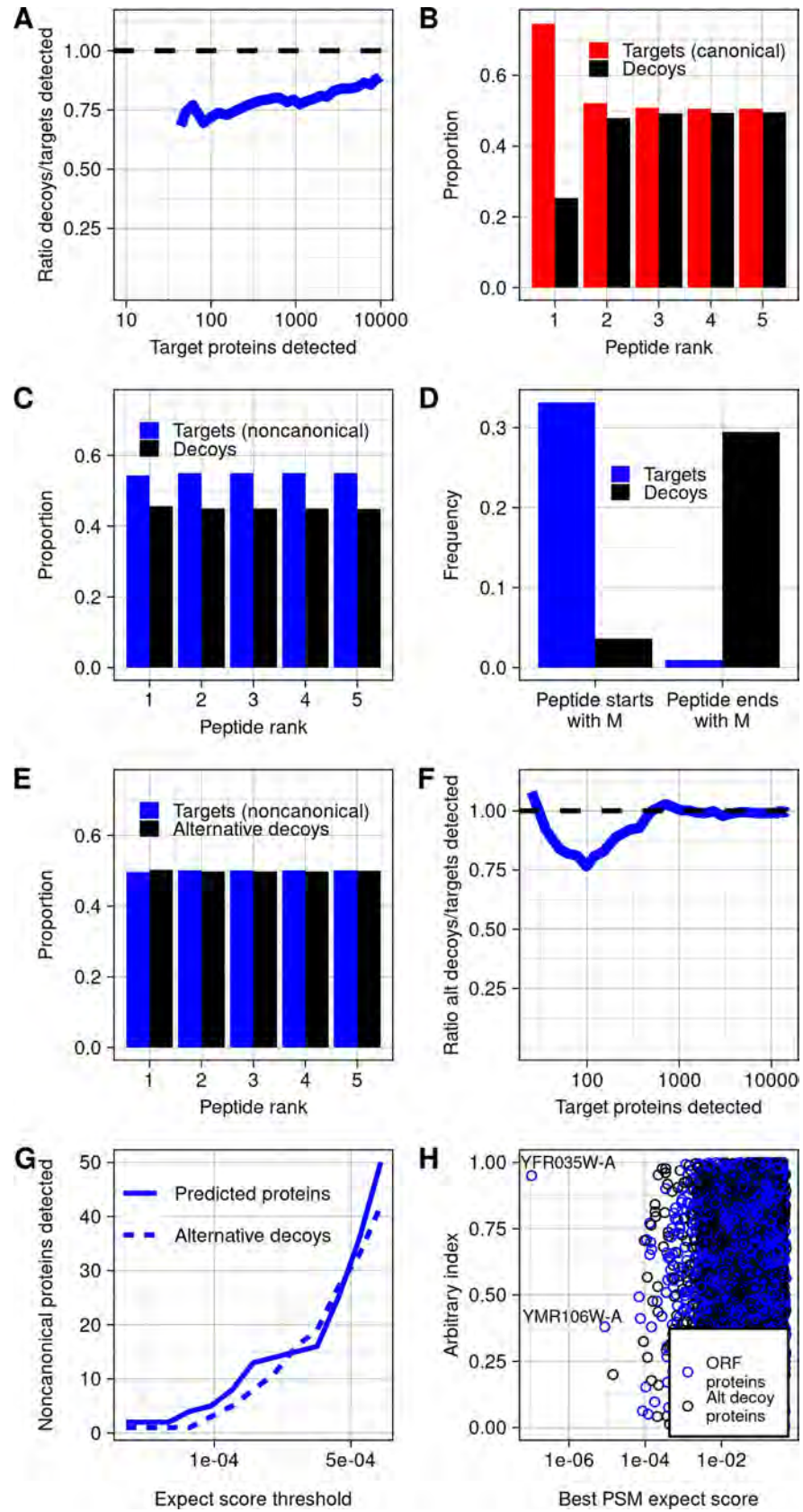


Fig 2. Decoy biases distort FDR estimation. (A) Among noncanonical proteins, the ratio of decoys detected to targets detected, across a range of targets detected, which varies with expect score threshold. Decoys are reverse sequences of the noncanonical protein database. (B) Across all spectra, the proportion of PSMs of each rank that are canonical peptides vs. decoys. Peptide rank indicates the rank of the strength of the PSM, ordered across all peptides and decoys. (C) Across all spectra, the proportion of PSMs of each rank that are noncanonical peptides vs. decoys. (D) Among noncanonical ORF and decoy predicted trypsinized peptides that match spectra at any confidence level, the proportion that start or end with a methionine. (E) Across all spectra, the proportion of PSMs of each rank that are noncanonical peptides vs. decoys, using the alternative decoy set. Alternative decoys are constructed by reversing noncanonical proteins after the starting methionine such that all decoy and noncanonical proteins start with M. (F) Among noncanonical proteins, the ratio of decoys detected to targets detected across counts of targets detected, using the alternative decoy set. (G) The number of predicted proteins and decoys at a range of confidence thresholds, using the alternative decoy set. (H) The best PSM expect scores for each noncanonical protein and decoy in the database, using the alternative decoy set. The data underlying this Figure can be found in [S1 Data](#). FDR, false discovery rate; ORF, open reading frame; PSM, peptide-spectrum match.

<https://doi.org/10.1371/journal.pbio.3002409.g002>

additional YMR106W-A peptides had stronger matches than the next strongest decoy ([S2 Fig](#)). Moreover, YMR106W and YFR035W-A both had translation rates (in-frame ribo-seq reads per codon) greater than 99% of noncanonical ORFs in the Wacholder and colleagues dataset [7]. The identification of multiple matching spectra for these noncanonical proteins and their relatively high rates of translation provide strong support that these are genuine detections. We note that this analysis also detected the 3 peptides from noncanonical ORFs reported by He and colleagues [29] with stronger expect scores than any decoys. However, as these proteins have recently been annotated by SGD as a result of the He and colleagues findings, they were not included in our noncanonical ORF set.

YMR106W-A is located 27 nt away from a Ty1 long terminal repeat. No homologs outside *S. cerevisiae* were found using BLASTP or TBLASTN against the NCBI nonredundant and nucleotide databases or against the 332 budding yeast genomes collected by Shen and colleagues [34]. It is thus plausible that this ORF was brought into the *S. cerevisiae* genome through horizontal transfer mediated by Ty1 retrotransposition [35]. This is a similar origin to that of ERVK3-1, a human microprotein derived from an endogenous retrovirus [36]. YFR035W-A overlaps the canonical ORF YFR035C on the opposite strand. Several known microproteins are expressed on the opposite strand of other genes [37,38], so it is possible that

Table 1. Noncanonical ORFs possibly detected in mass spectrometry data.

Systematic name	Approaches used to find	Coordinates	Peptides detected (spectra count)	Best MSFragger expect score	Quantile of translation rate	Evidence of conservation	Strength of evidence**
YMR106W-A*	Standard MSFragger, MS-GF+, MaxQuant	chrXIII:480924–481187	ISMEAINNFIK (1)	8.66×10^{-6}	0.9963	None	Strong
YFR035W-A*	Standard MSFragger, MS-FG+	chrVI:226260–226550	HLNIPDLRFEK (2)	1.04×10^{-7}	0.995	Conserved within genus	Strong
YPR195C-A*	MaxQuant	chrXVI: 930265–930405	LSAMVLTK (1)	1.79×10^{-4}	0.61	None	Weak
YOR109W-A*	Acetylation	ChrXV: 528606–528701	LSLKC GCCSVCIPLNERR (1)	8.37×10^{-6}	0.27	None	Weak
YIL059C	Non-enzymatic end	chrIX:246550–246915	EFD F D V G Y E E F V R (1)	2.78×10^{-6}	0.88	Conserved with <i>S. jurei</i>	Strong
YNL155C-A*	Same-strand overlap	chrXIV: 341911–342135	KQHT EWPIEENR (1), MIGLIVVPILFAIK (11)	5.77×10^{-9}	0.9963	Conserved within genus	Strong

*Assigned in this study.

**Assessed based on proteomic, translation, and evolutionary evidence.

<https://doi.org/10.1371/journal.pbio.3002409.t001>

both YFR035W-A and YFR035C are protein-coding genes. However, YFR035C was not detected in our canonical protein MS analysis. YFR035C deletion was reported to increase sensitivity to alpha-synuclein [39], but this observation stemmed from a full ORF deletion that would also have disturbed YFR035W-A. While YFR035C has 2.5 in-frame ribo-seq reads per codon mapping to the ORF in the Wacholder and colleagues [7] dataset, YFR035W-A has 232, greater by a factor of 93 (Fig 3A). In a multiple sequence alignment with other species in the *Saccharomyces* genus, the full span of the YFR035W-A amino acid sequence aligns between all species (Fig 3B), while other species have an early stop preventing alignment with most of the YFR035C amino acid sequence (Fig 3C). Thus, evolutionary, translation, and proteomics evidence all indicate that unannotated ORF YFR035W-A is a better candidate for a conserved protein-coding gene than annotated ORF YFR035C.

Alternative strategies for MS search yield 2 additional noncanonical peptide detections

Aside from YMR106W-A and YFR035W-A, the standard MSFragger approach did not confidently detect proteins encoded by noncanonical ORFs supported by ribo-seq. We therefore considered some reasons we could miss noncanonical proteins present in the data and employed alternative approaches to test these possibilities. For each approach, we determined whether a substantial list of noncanonical ORFs could be constructed with FDR of 10% at the protein level. If not, we further investigated peptides with MSFragger expect scores $<10^{-5}$, similar to the level at which YMR106W-A was detected, or else the strongest candidates if another program was used.

First, we hypothesized that a mismatch between the environmental conditions in which the ribo-seq and MS datasets were constructed may explain the low number of detected noncanonical proteins. To investigate this possibility, we reduced our analysis to consider only ribo-seq and MS experiments conducted on cells grown in YPD at 30°C. The target/decoy ratio looked similar to the analysis on the full dataset, with no noncanonical protein detection list generatable with a 10% FDR (Fig 4A). The only noncanonical proteins detected at a 10^{-5} expect score threshold were the same two as in the standard analysis.

Next, to ensure that our results were not specific to the search program MSFragger, we repeated our analysis using MS-GF+ [40]. The pattern of target versus decoy detection was again similar to the standard MSFragger analysis, with no noncanonical detection list generatable with a 10% FDR (Fig 4B). The only noncanonical proteins detected at a 10^{-5} e-value threshold (e-value is the PSM confidence score given by MS-GF+) were YMR106W-A and YFR035W-A, also found by MSFragger. We then applied the machine learning based MS²Rescore algorithm [41] to rescore the MSGF+ results, as this has been shown to improve peptide identification rates in some contexts. However, this also did not improve target-decoy ratios (Fig 4C). We also performed a search using MaxQuant [42], which uses the Andromeda score [43] to indicate the strength of a PSM. The general pattern was similar to MSFragger and MS-GF+ (Fig 4D), with only 3 peptides given stronger scores than the strongest decoy; two belonged to YMR106W-A and one to a different hypothetical protein we named YPR195C-A following SGD conventions. However, this hypothetical protein was identified from a peptide found only once, showed no evidence of conservation in the *Saccharomyces* genus, and was not translated at high levels (Table 1); we therefore conclude that it may not be a genuine detection.

Work in other species has shown that use of multiple proteases, rather than trypsin alone, can improve detection of small or noncanonical proteins [44,45]. We therefore investigated whether use of alternative protease could help with noncanonical detection in the dataset we

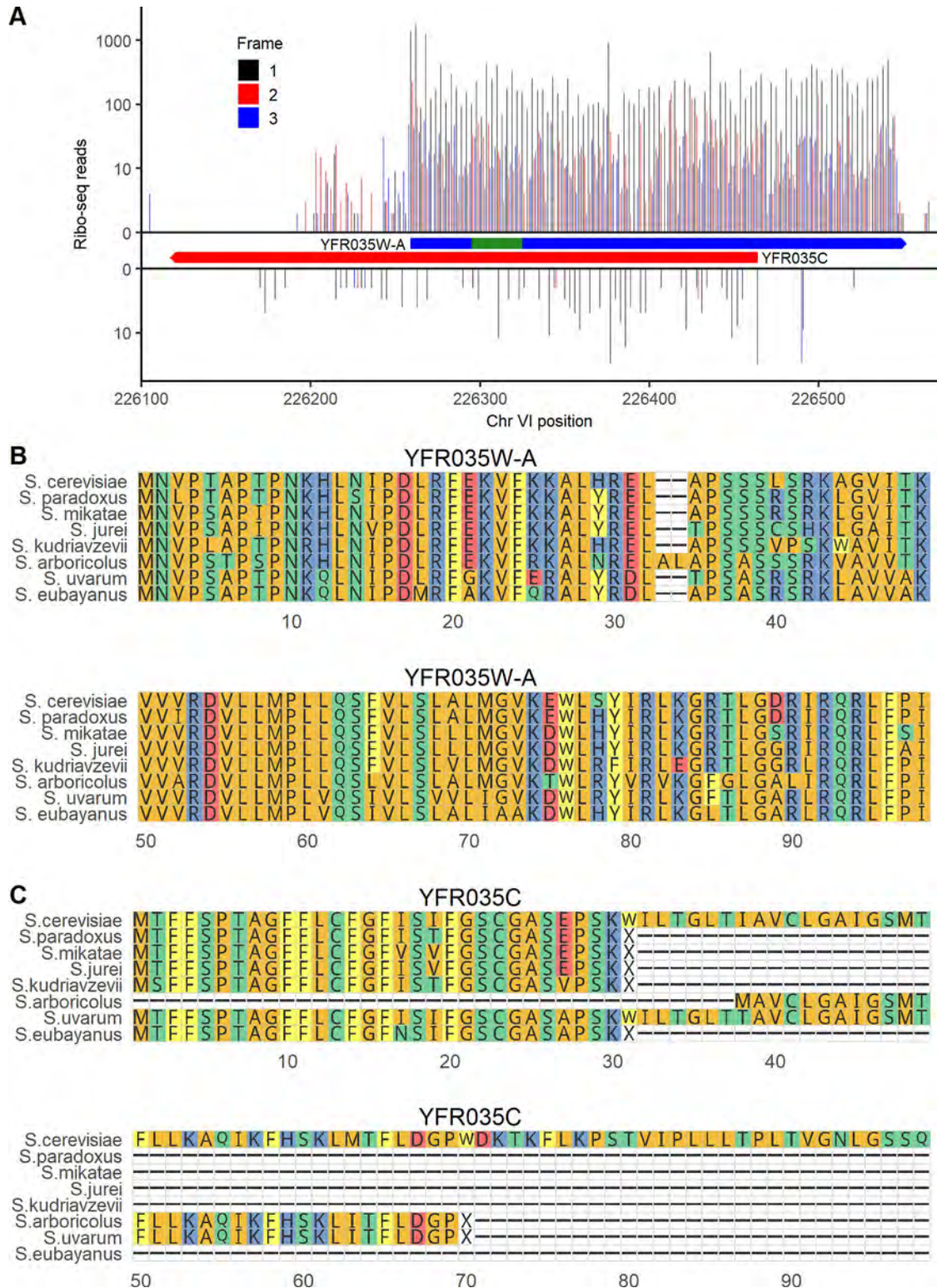


Fig 3. Translation and evolutionary evidence indicates that unannotated ORF YFR035W-A is likely a conserved gene. (A) ribo-seq reads on unannotated ORF YFR035W-A (top) and annotated ORF YFR035C (bottom). The bounds of each ORF are indicated in boxes. The location of the detected peptide is indicated in green. Reads are assigned to the reading frame in which the position they map to is the first position in a codon; on each strand, frame 1 corresponds to the reading frame of the ORF shown. The data underlying this Figure can be found in [S1 Data](#). (B) Alignment of the amino acid sequence of YFR035W-A with its homologs across the *Saccharomyces* genus. (C) Amino acid alignment of the annotated ORF YFR035C and its homologs in *Saccharomyces*.

<https://doi.org/10.1371/journal.pbio.3002409.g003>

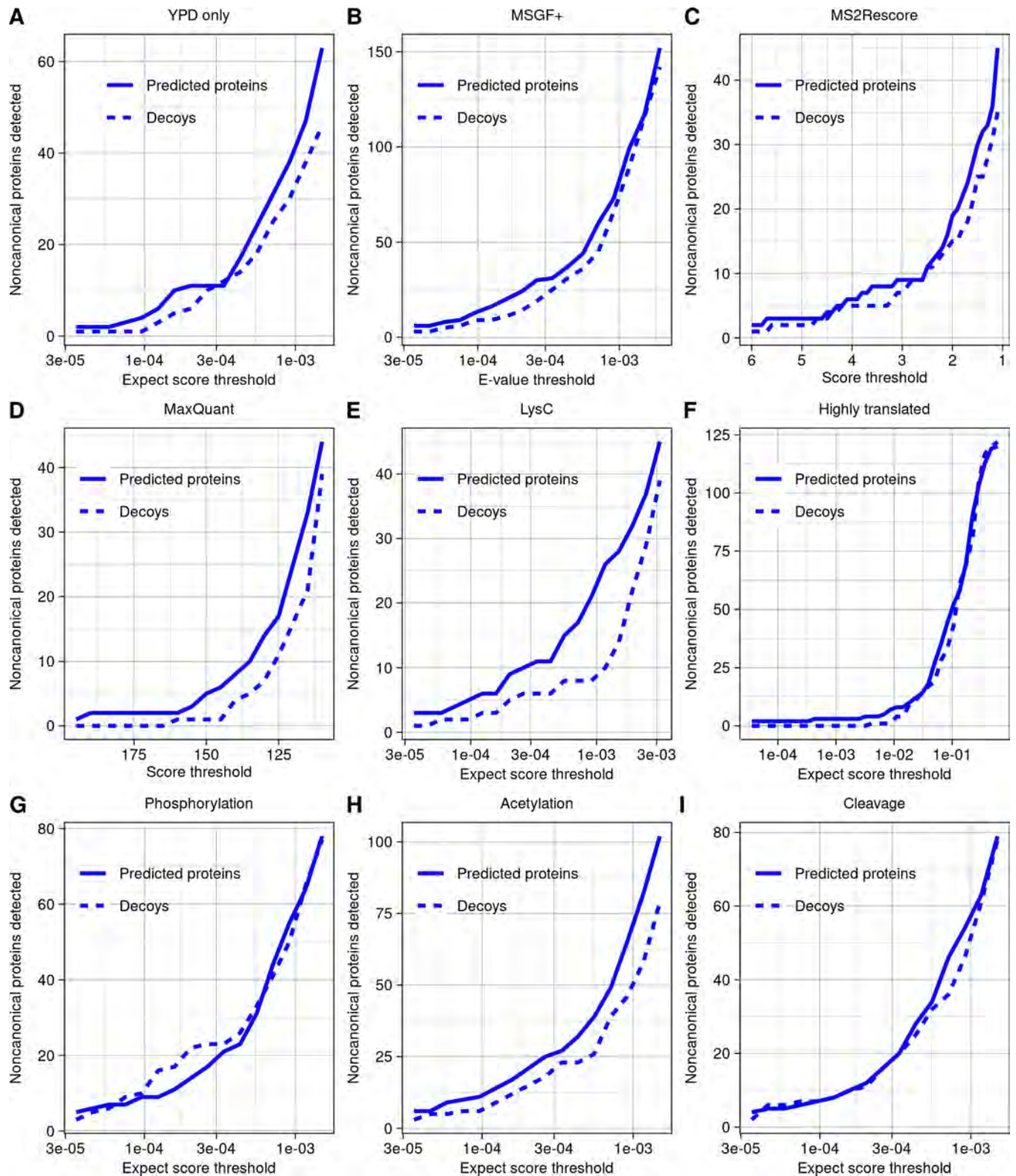


Fig 4. Alternative strategies for detecting noncanonical ORF products yield few additional discoveries. (A-I) The number of predicted proteins and decoys detected across a range of thresholds, using a variety of strategies for detection. Aside from the specific changes indicated, all searches were run using the same parameter settings. The data underlying this Figure can be found in [S1 Data](#). (A) Analysis using only ribo-seq and MS data taken from yeast grown in YPD at 30°C. (B) Analysis using the program MSGF+. (C) Analysis using the rescoring algorithm MS²Rescore on MSGF+ results. Higher scores indicate higher

confidence. (D) Analysis using the program MaxQuant. Higher scores indicate higher confidence. (E) Analysis including only experiments using LysC as protease. (F) Analysis restricted to database of 379 predicted noncanonical proteins encoded by ORFs in the top 2% of in-frame ribo-seq reads per codon. (G) Analysis allowing for phosphorylation of threonine, serine, or tyrosine as variable modifications. (H) Analysis allowing for acetylation of lysine or n-terminal acetylation as variable modifications. (I) Analysis allowing detection of peptides with one end as a non-enzymatic cut site.

<https://doi.org/10.1371/journal.pbio.3002409.g004>

examined. Some experiments by Gao and colleagues [30] used LysC as the enzyme, and though these were included in all analyses, all detections noted so far were tryptic peptides. When the LysC experiments were analyzed alone using MSFragger, we were still unable to construct a list of noncanonical proteins at 10% FDR (Fig 4E), and there were no PSMs with expect scores below 10^{-5} .

One challenge in MS proteogenomics is that expanding searches to larger sequence database sizes raises the threshold for detection, which could limit discoveries [46]. To reduce this challenge, we constructed a sequence database consisting only of the proteins expressed from the top 2% of noncanonical ORFs by translation rate. With only 379 proteins, this database is much smaller than the canonical yeast proteome, yet still we did not observe an improvement in the decoy/target ratio or any additional detections at a 10^{-5} expect score (Fig 4F).

Next, we hypothesized that noncanonical proteins could have been missed from our searches due to posttranslational modification or cleavage. Allowing for phosphorylation of threonine, serine, or tyrosine as variable modifications did not improve the decoy/target ratio or yield detection of any noncanonical phosphorylated peptides at a 10^{-5} expect score threshold (Fig 4G). Adding acetylation of lysine or N-terminal acetylation as variable modifications did not improve target/decoy ratios overall (Fig 4H), but a single hit with an expect score of 8.37×10^{-6} was found, which we named YOR109W-A following SGD convention. However, this hypothetical protein was identified from a peptide found only once, showed no evidence of conservation in the *Saccharomyces* genus, and was translated at lower levels than other non-canonical protein detections (Table 1); we therefore conclude that it may not be a genuine detection.

Allowing for peptides to have one end that is not an enzymatic cut site to search for potential cleavage products did not improve target/decoy ratios overall (Fig 4I), but a single additional noncanonical peptide was identified with a relatively strong expect score of 2.78×10^{-6} (S3 Fig). This peptide was from the ORF YIL059C, annotated as “dubious” on SGD, indicating that, in the view of SGD, the ORF is “unlikely to encode a functional protein.” YIL059C is in the 88th percentile of translation rate and 99th percentile of length among noncanonical ORFs, at 366 nt (Table 1). It overlaps on the opposite strand of the ORF YIL060W, classified as “verified” on SGD. However, the references listed in support of YIL060W are all based on full deletion experiments, which would disturb both ORFs and therefore do not distinguish between them [47–49]. YIL060W may have been considered the more likely gene as its ORF is longer, at 435 nt. But, as in the case of YFR035C and YFR035W-A discussed above, both ribo-seq and MS data provide more support for the noncanonical ORF than the canonical ORF on the opposite strand: YIL059C has 14 in-frame ribo-seq reads per codon compared to only 0.48 in-frame reads per codon for YIL060W (Fig 5A), and YIL060W was not detected in our MS analysis of canonical ORFs. Given that the YIL059C peptide had one non-enzymatic end, we tested whether it could be a signal peptide using the TargetP program [50]. YIL059C has a predicted signal peptide cleavage site corresponding exactly to the detected peptide (Fig 5B), providing additional support that this is a genuine detection. Searching for homologs using TBLASTN, BLASTP, and BLASTN in the NCBI databases and TBLASTN and BLASTN in *Saccharomyces* genus genomes at a 10^{-4} e-value threshold, YIL059C and YIL060W have detected DNA homologs only in *Saccharomyces* species *S. paradoxus*, *S. mikatae*, and *S. jurei*. There

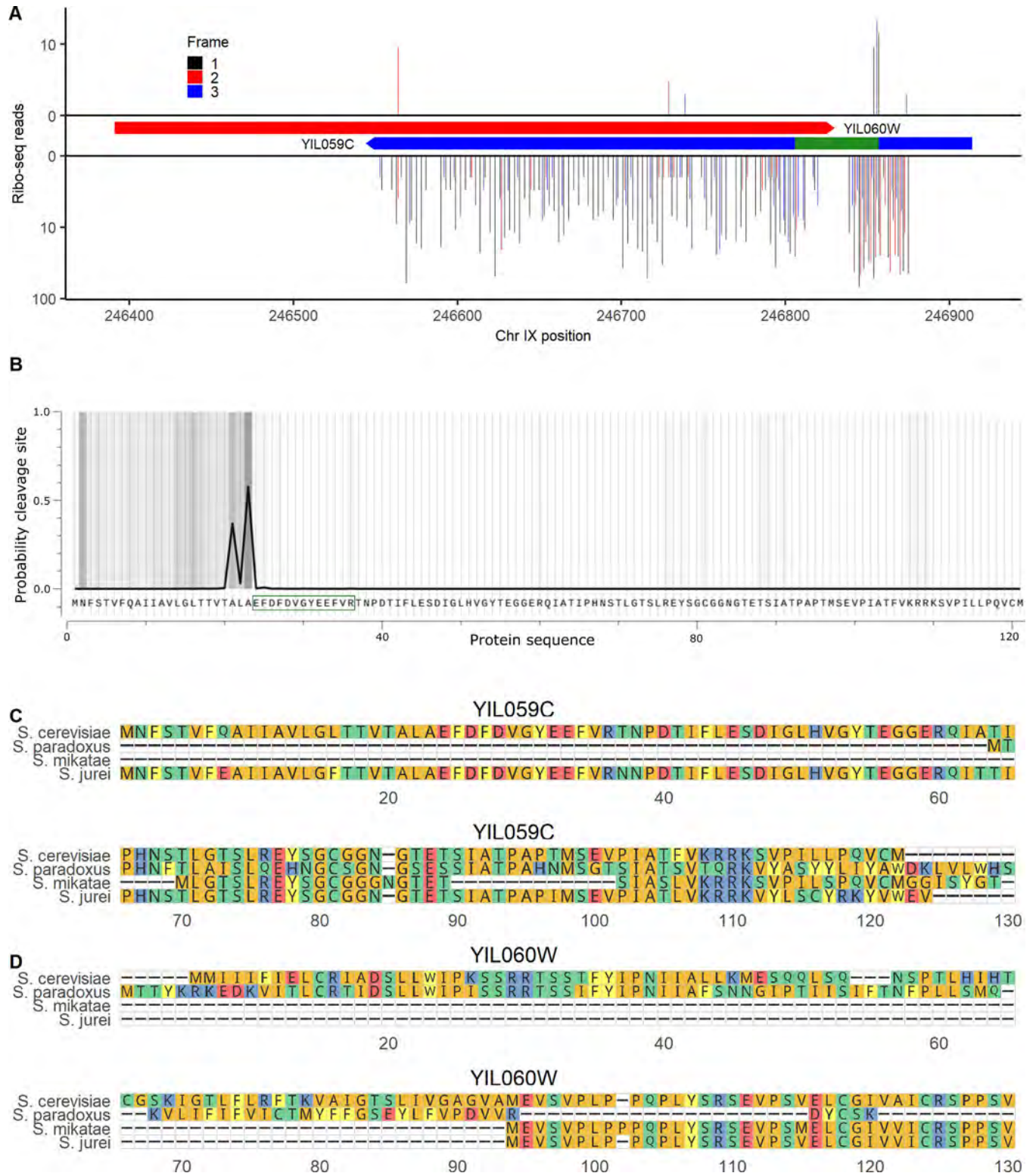


Fig 5. Dubious ORF YIL059C encodes a signal peptide. (A) Ribo-seq reads on canonical ORF YIL060W (top) and “dubious” ORF YIL059C (bottom). The bounds of each ORF are indicated in boxes. The location of the detected peptide is indicated in green. Reads are assigned to the reading frame in which the position they map to is the first position in a codon; on each strand, frame 1 corresponds to the reading frame of the ORF shown. (B) Probability of a signal peptide cleavage site across the YIL059C sequence, as predicted by TargetP [50]. The peptide detected in MS analysis is indicated by a green box. (C) Alignment of YIL059C with the highest identity protein matches at the homologous locus in *Saccharomyces* species. Only species with a homologous locus (at the DNA

level) are shown. (D) Alignment of YIL060W, the canonical gene antisense to YIL059C, with its highest identity protein matches at the homologous locus in *Saccharomyces* species. The data underlying this Figure can be found in [S1 Data](#).

<https://doi.org/10.1371/journal.pbio.3002409.g005>

was an intact protein alignment of YIL059C between *S. cerevisiae* and *S. jurei* (**Fig 5C**), while YIL060W has no homologs that fully align in any species (**Fig 5D**). YIL059C is located adjacent, and on the opposite strand, to a Ty2 long terminal repeat. These observations are consistent with a transposon-mediated horizontal transfer of YIL059C prior to divergence between *S. cerevisiae* and *S. mikatae*, followed by loss in *S. paradoxus* and *S. mikatae* and preservation in *S. cerevisiae* and *S. jurei*. We do not rule out a role for YIL060W, but all considered evidence provides greater support for the biological significance of YIL059C.

Finally, we wanted to investigate a class of noncanonical ORFs not present in the Wacholder and colleagues translated ORF dataset: noncanonical ORFs that overlap a canonical ORF on the same strand. These ORFs are difficult to identify by ribo-seq because it is challenging to distinguish noncanonical ORF-associated ribo-seq reads from those of the canonical gene; however, some proteins encoded by noncanonical ORFs that overlap canonical ORFs have been identified in previous analyses [36,51], including in the Sun and colleagues dataset included in our MS analysis [31]. We therefore constructed a sequence database consisting of all canonical ORFs as well as noncanonical ORFs that overlap canonical ORFs on the same strand, with ORFs determined only from the genome sequence rather than expression evidence. Running this database against the full set of MS data, we again observed that, among noncanonical ORFs, decoys were detected at a high fraction of the rate of predicted peptides and so a list of confident noncanonical detections could not be established at reasonable FDRs (**Fig 6A**). These findings differ from those of Sun and colleagues [31], who found peptides from 70 noncanonical overlapping ORFs at a claimed 1% FDR. Of these claimed detections, 69 are also in our database, but none have peptides with stronger expect scores than the strongest decoys. To better understand this apparent discrepancy, we obtained the deposited MS program result output from the Sun and colleagues' analysis. We observe that, within the Sun and colleagues results, the claimed noncanonical detections have confidence scores that are much weaker than canonical detections and similar to many decoys (**S4 Fig**). Thus, the Sun and colleagues results do not differ from ours because more high-confidence noncanonical PSMs were found. Rather, the difference is in statistical approach for FDR estimation. Sun and colleagues controlled FDR at a 1% proteome-wide level, rather than controlling a noncanonical-specific FDR as in our analysis. Moreover, Sun and colleagues analyzed multiple distinct datasets separately, each at a 1% FDR, and then constructed a combined list containing any protein found at 1% FDR in at least one analysis. Merging lists of detected proteins each constructed at 1% FDR is expected to generate a list with an FDR much higher than 1% [26].

In our analysis, only one overlapping ORF had associated PSMs with expect scores stronger than 10^{-5} . We assigned it systematic name YNL155C-A following SGD conventions (**Table 1**). The stable translation product of YNL155C-A was supported by 2 distinct peptides, which together were detected 12 times with expect scores below the best decoy score of 5.69×10^{-7} , with the strongest value of 5.77×10^{-9} (**S5 Fig**). This 255-bp ORF overlaps canonical gene YNL156C for 57 of 255 bases. Its translation product was not identified in the Sun and colleagues' analysis [31]. A clear pattern of ribo-seq read triplet periodicity was observed in the frame of YNL155C-A (i.e., reads tend to match to the first position of a codon) before the overlap with YNL156C, indicating translation in this frame (**Fig 6B**). There also appears to be a triplet periodic pattern in a frame distinct from both YNL156C and YNL155C-A at the locus, suggesting that all 3 frames may be translated. Excluding the overlapping region, there are 265 reads per codon on the ORF that map to the first position of a codon in the YNL155C-A

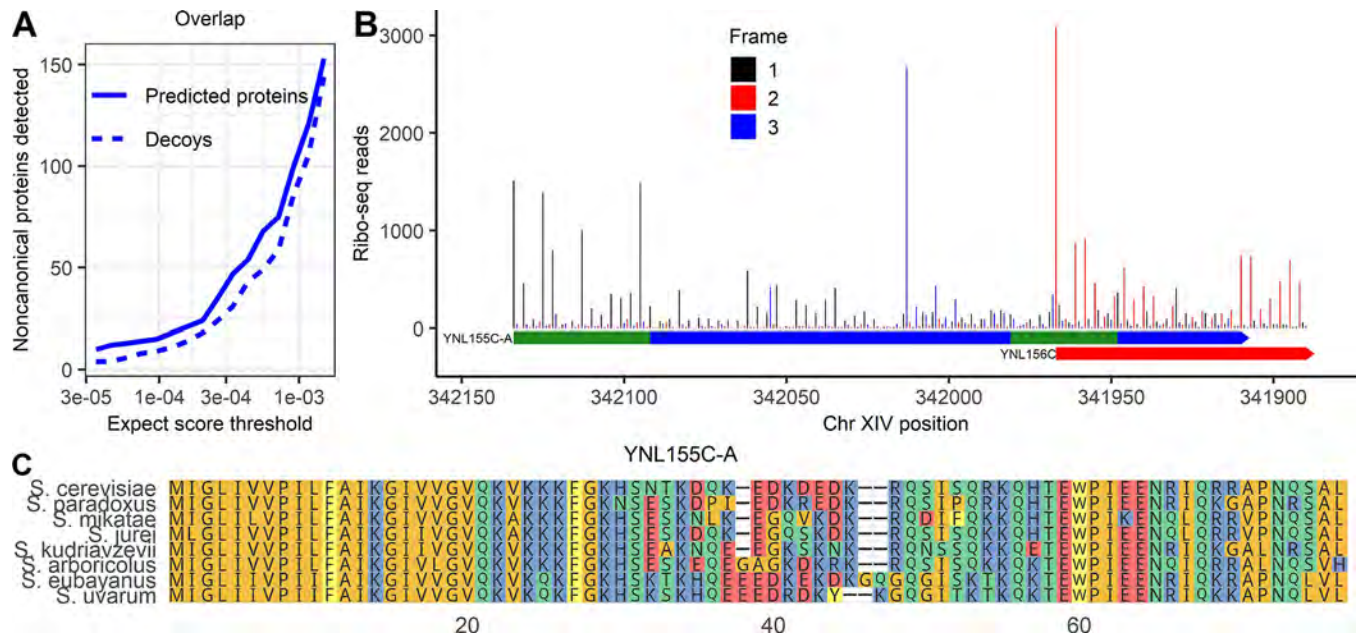


Fig 6. Noncanonical protein YNL155C-A, detected by MS, is well translated and conserved in *Saccharomyces* genus. (A) Predicted proteins and decoys detected in MS data at a range of expect score thresholds, among noncanonical proteins that could be encoded by ORFs that overlap canonical ORFs on alternative frames. (B) Ribo-seq reads across the YNL155C-A ORF. Reads are assigned to the reading frame in which the position they map to is the first position in a codon. Frame 1 is the reading frame of YNL155C-A. The full span of YNL155C-A and the start of YNL156C are shown. The position of the 2 peptides found in MS are in green. (C) Multiple sequence alignment of YNL155C-A with its homologs in the *Saccharomyces* genus. The data underlying this Figure can be found in [S1 Data](#).

<https://doi.org/10.1371/journal.pbio.3002409.g006>

reading frame; this would put it in the 99.6th percentile of translation rate among translated noncanonical ORFs in the Wacholder and colleagues dataset. No homologs were found in more distantly related species in a TBLASTN search against the NCBI nonredundant protein database, but YNL155C-A was well conserved across *Saccharomyces* (Fig 6C). As only 19 of 75 codons of YNL155C-A overlap YNL156C-A (Fig 6B), the strong amino acid conservation across the length of the full protein (Fig 6C) indicates purifying selection on YNL155C-A itself. Thus, proteomic, translation, and evolutionary evidence all support YNL155C-A as a protein-coding gene.

The low detectability of noncanonical proteins can be explained by their short lengths and low translation rates

We sought to understand why the large majority of proteins predicted from translated noncanonical ORFs remained undetected across multiple computational search strategies. A major difference between canonical and noncanonical proteins is length: The average canonical protein is 503 residues compared to only 31 among noncanonical proteins. Short size can affect protein detection probability through distinct mechanisms: Shorter sequences provide fewer distinct peptides when digested, and the sample preparation steps of the MS experiment may be biased against small proteins [17]. To investigate the first possibility, we computationally constructed all possible tryptic peptide sequences that could be theoretically detected from the proteins in the sequence database given their length and mass. Canonical proteins have an average of 62 theoretically detectable tryptic peptides compared to 6.7 for predicted noncanonical proteins. Among noncanonical proteins, 2,496 of 18,947 (13%) lack any theoretically detectable tryptic peptide, meaning these would be impossible to detect using our search

strategy; by contrast, only 11 canonical proteins (0.2%) lack any possible peptides. Not only are many noncanonical proteins undetectable due to the complete absence of potential tryptic peptides, but many others have so few potential peptides that it is unlikely that at least one will be discovered at current sensitivities. Indeed, the overall detection rate for canonical peptides is only 6% (at a 10^{-6} MSFragger expect score threshold). While 69% of canonical proteins have at least one peptide detected at this threshold, based on simulations, only 22% of noncanonical proteins would have a detectable peptide at this detection rate. These results illustrate how the short length of noncanonical proteins and the low numbers of potential tryptic peptides that result limit noncanonical detection.

Still, the larger challenge in noncanonical protein detection is not just the low number of possible peptides but the much lower detection rate among them than among canonical peptides. Our analyses only detect a handful of noncanonical proteins, far below the 22% that would be expected if lack of potential tryptic peptides was the only limitation. This is because, as a group, noncanonical proteins almost completely lack the high-confidence PSMs that support numerous canonical protein detections (S6 Fig). We therefore hypothesized that technical biases other than the number of potential tryptic peptides further limit the MS detectability of small proteins.

To investigate this hypothesis, we calculated the peptide detection rate, out of all theoretically detectable peptides, among different ORF size classes (Fig 7A). We observe a division between canonical ORFs shorter versus longer than 150 nt. Among 27 canonical yeast ORFs shorter than 150 nt, none of 280 theoretically detectable peptides were detected at a 10^{-6} expect score threshold. This detection rate is significantly below expectation given the overall 6% rate at which canonical peptides are detected (binomial test, $p = 4.73 \times 10^{-8}$), suggesting that there may be technical biases limiting detection of proteins that are this short. As 83% of noncanonical ORFs (15,717) are shorter than 150 nt, short length can partially explain the low detectability of noncanonical ORF peptides. In contrast, however, among canonical ORFs longer than 150 nt, shorter lengths were associated with higher probabilities that a peptide was detected (Fig 7A). This is likely due to a trend of higher translation rates among shorter ORFs (S7A Fig), which is also observed among noncanonical ORFs (S7B Fig). This observation suggests that short size should not be a barrier to detection of peptides encoded by noncanonical ORFs longer than 150 nt. There are 3,080 such ORFs, potentially encoding 35,392 detectable peptides, yet only one peptide was found at a 10^{-6} expect score threshold (the peptide from YFR035W-A; Table 1).

In addition to length, noncanonical ORFs also differ from canonical ORFs in amino acid composition [7]. The amino acid composition of noncanonical proteins could limit detectability relative to canonical proteins because detectability of a peptide in an MS experiment is affected by its physical properties [52]. To test this possibility, we applied the AP3 algorithm [53], which predicts peptide detectability from peptide sequence, assigning a score from 0 to 1, to the full set of tryptic peptides predicted from the yeast translome. As expected, detectability scores corresponded strongly to observed detection rates among canonical peptides (S7B Fig). For example, 20% of canonical peptides scoring above 0.9 were detected at a 10^{-6} expect score threshold, compared to only 0.17% of peptides scoring below 0.1, an 85-fold increase. The distribution of detectability scores was similar between canonical and noncanonical peptides overall, with the major difference being that 6.3% of canonical peptides scored above .9 compared to only 3% of noncanonical peptides (Fig 7C). If canonical peptides had the same distribution of scores as noncanonical peptides, the number of detected canonical peptides would be 83% of those found in actuality. Thus, amino acid composition does increase the difficulty in detection of noncanonical peptides, but this is a relatively small effect.

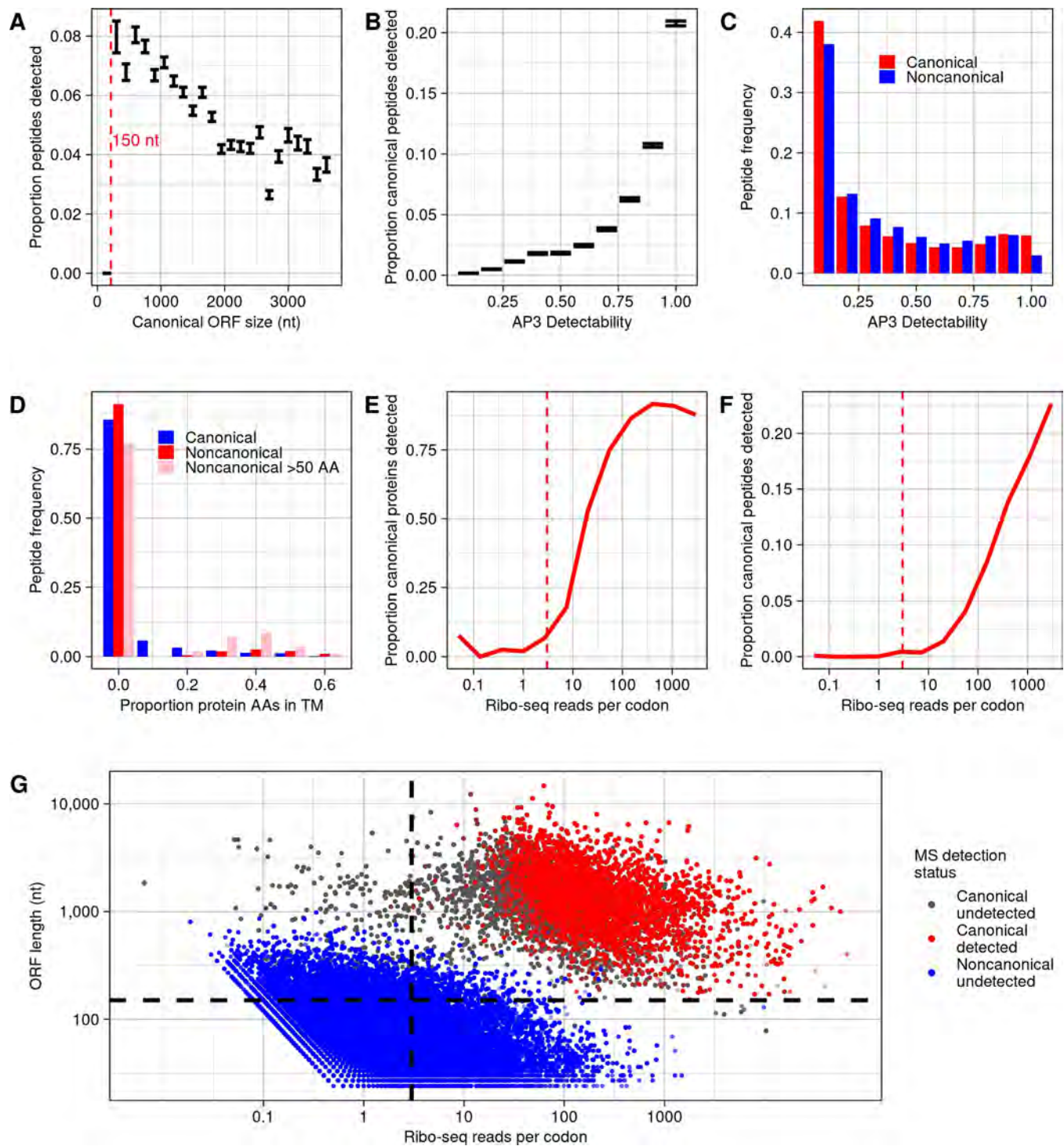


Fig 7. Lack of detection of noncanonical proteins can be largely explained by their low translation rate. (A) The proportion of canonical peptides detected, among all eligible for detection, for ORFs of different size classes. Bars indicate a range of one standard error. A dashed line is drawn at 150 nt, below which no canonical peptides are detected. (B) The proportion of peptides detected, among all eligible for detection, for canonical proteins binned by detectability score given by the AP3 algorithm [53]. Bars indicate a range of one standard error. (C) Frequencies of predicted peptides by detectability score among canonical and noncanonical proteins. (D) Frequencies of predicted peptides among canonical proteins, noncanonical proteins, and noncanonical proteins larger than 50 amino acids, with proteins binned by proportion of amino acids in predicted transmembrane domains. Predictions were made using TMHMM [54]. The first bin includes only proteins with no transmembrane domain predicted. (E) Proportion of canonical proteins detected within bins defined by in-frame ribo-seq reads per codon mapping to the ORF. A dashed line is drawn at 3 reads per codon, below which few canonical proteins are detected. (F) Proportion of

canonical peptides detected, out of all eligible, within bins defined by in-frame ribo-seq reads per codon. A dashed line is drawn at 3 reads per codon, below which few canonical peptides are detected. (G) For all peptides predicted from canonical and noncanonical translated ORFs with detectable mass and length, the in-frame ribo-seq reads per codon and ORF length is plotted. Each peptide is classed by whether it is canonical or noncanonical, and whether it is detected at a 10^{-6} expect score threshold. Nearly all detectable peptides are restricted to the top right section bound by dashed lines, where ORF length >150 nt and reads per codon >3 . The data underlying this Figure can be found in [S1 Data](#).

<https://doi.org/10.1371/journal.pbio.3002409.g007>

Transmembrane proteins are also more difficult to detect by MS [55]. To determine whether a high transmembrane propensity among noncanonical proteins could help explain their low detection rates, we used TMHMM [54] to predict transmembrane domains among all proteins. As expected, detectability of canonical peptides declines with increased transmembrane content of the protein (S8 Fig). Among noncanonical proteins overall, only 11% are predicted to have transmembrane domains, below the 20% of canonical proteins predicted to have one. However, among noncanonical proteins longer than 50 amino acids, there is an excess of proteins with transmembrane domains that make up more than 20% of the protein (Fig 7D; $p < 10^{-16}$, chi-squared test). Thus, for some larger noncanonical proteins we would otherwise expect to be more likely to be detected, transmembrane domains likely hinder their detection.

Besides length and sequence composition, a major difference between canonical and non-canonical ORFs is expression level, and this too can affect the probability a protein is detected in MS data [17]. We therefore evaluated the relation between translation level and detection probability using the ribo-seq data from Wacholder and colleagues. The number of in-frame ribo-seq reads per codon that map to a canonical ORF is strongly associated with the probability of detecting the ORF product at a 10^{-6} expect score threshold, at both the protein (Fig 7E) and peptide (Fig 7F) levels. As with protein length, we can use the canonical ORFs to infer an approximate detection limit: Among 439 canonical ORFs with fewer than 3 in-frame reads per codon, only 3 of 9,253 theoretically detectable peptides were detected at a 10^{-6} threshold. Thus, almost all canonical peptides, with only these 3 exceptions, are found among ORFs with reads per codon above 3 and longer than 150 nt. Yet, only 448 noncanonical ORFs (2.4% of total) are in this category (Fig 7G). Thus, almost all noncanonical ORFs are outside the limits in which canonical ORF products are detected by MS.

For the 448 noncanonical translated ORFs displaying length and expression levels amenable to detection (longer than 150 nt and at least 3 reads per codon), we estimated the probability a peptide would be detected at a 10^{-6} expect score threshold under the assumption that detection probability depends only on translation rate. This probability was estimated as the peptide detection rate among canonical ORFs with a similar translation rate to the transient ORF (a natural log of reads per codon within 0.5). Given these estimates, the expected total count of detected peptides for the 448 ORFs was 5.41. In reality, a single peptide was detected (the peptide from YFR035W-A; Table 1). To see whether observing only a single detection was surprising, we simulated the distribution of peptide detection counts under the estimated detection probabilities. The 95% confidence interval of noncanonical peptide detections ranged from 1 to 10. Thus, the single observed detection of a noncanonical peptide at a 10^{-6} expect score threshold is within range of expectations.

Evolutionarily novel ORFs missed in MS data due to low sensitivity

Wacholder and colleagues identified a class of rapidly evolving, evolutionarily novel ORFs termed “transient ORFs.” Despite lacking long-term evolutionary conservation, transient ORFs can express proteins that have major effects on phenotype [7]. Of 18,947 noncanonical ORFs analyzed here, 17,471 (91%) are inferred to be evolutionarily transient in the Wacholder

Table 2. No peptides detected from well-described canonical evolutionarily transient ORFs.

Canonical transient ORF	Major publication	Minimum expect score
MDF1	Li et al. 2010 [38]	1.85
YBR196C-A	Vakirlis et al. 2020 [56]	.99
HUR1	Omidi et al. 2018 [57]	1.62
YPR096C	Hajikarimlou et al. 2020 [58]	0.10
ICS3	Alesso et al. 2015 [59]	0.03

<https://doi.org/10.1371/journal.pbio.3002409.t002>

and colleagues dataset; an additional 103 canonical ORFs are also classified as transient. As evolutionarily transient ORFs comprise such a large portion of the translome, it is of interest to determine whether their products can be detected by shotgun MS. No evolutionarily transient noncanonical ORF peptides were detected in our analyses, as none of the noncanonical proteins we identified (listed in [Table 1](#)) were classified as evolutionarily transient. Among the 103 evolutionarily transient canonical ORFs, none were detected at a 10^{-5} expect score threshold, and similar numbers of ORFs and decoys were found at weaker thresholds ([S9 Fig](#)).

Five transient canonical ORFs have been characterized in some depth [7], including MDF1, a well-established de novo gene specific to *S. cerevisiae* that plays a role in the yeast mating pathway [38]. Yet, none of these show any evidence of detection in the MS datasets examined here, with expect scores far higher than what would constitute even weak evidence ([Table 2](#)). These results indicate that MS detection appears to miss the entire class of evolutionary transient ORFs, whether canonical or not, including even those known to play important biological roles.

Discussion

Bottom-up MS is an attractive approach for validating noncanonical ORFs supported by ribosome profiling due to the ease of testing large lists of predicted proteins but is limited by low sensitivity. Analyzing 3 MS experiments optimized to find small proteins, we identified 3 noncanonical proteins expressed from ORFs identified as translated in a recent analysis of yeast ribosome profiling studies (YMR106W-A, YFR035W-A, and YIL059C). We additionally found MS evidence for an ORF not initially identified by ribo-seq, YNL155C-A, due to overlapping a canonical ORF on the same strand. All 4 proteins were translated at rates much higher than typical noncanonical ORFs, providing independent evidence that they are genuine protein-coding genes; 3 also showed evidence of evolutionary conservation. These findings illustrate the power of using proteomic, translation, and evolutionary evidence in combination to identify undiscovered genes at high confidence even in a well-annotated model organism.

Nevertheless, the vast majority of ribo-seq-supported noncanonical ORFs showed no evidence of detection in MS datasets. We show that the low rates of detection of noncanonical ORFs can be explained primarily by their short size and low translation rate: Canonical ORFs at similar sizes and translation rates are also very rarely detected. The general amino acid composition of noncanonical ORFs, and the abundance of transmembrane domains among the longest ones, further contribute to hindering detection. As these factors explain the differences in detectability between canonical and noncanonical ORFs, little else about the biology of noncanonical ORFs can be inferred from their lack of detection in MS data. We cannot conclude that proteins expressed from noncanonical ORFs are less stable than canonical proteins, that they are targeted for degradation at higher rates, or that they are less likely to be functional, except to the extent that low expression already justifies these inferences.

A majority of the yeast noncanonical translome, and a small portion of the canonical, consist of evolutionarily young ORFs with little evolutionary conservation, classified as

“evolutionary transient ORFs” in the Wacholder and colleagues dataset [7]. No transient ORFs were detected in MS data, not even canonical transient ORFs that are well characterized. Evolutionary transient ORFs are both abundant in the genome and biologically significant, with some playing important roles in conserved pathways despite their short evolutionary lifespans [7]. Though we were unable to detect them in MS data, numerous proteins expressed from evolutionarily transient ORFs are found to be present in the cell in microscopy studies [7]. The biology of the vast majority of these ORFs are poorly understood; most have never been studied in any depth. Bottom-up MS, using currently available approaches, does not appear useful for identifying the evolutionarily transient ORFs most likely to have interesting biological roles.

There is considerable variability across studies that attempt to detect noncanonical proteins using MS, with some reporting detection of hundreds of proteins, while others, as in this study, find many fewer [10,13,15,18,21,31,36,60–62]. This could partly reflect biological differences between the cell types and species analyzed. However, there is also great variation in statistical approach. For example, though it is recommended for studies of noncanonical proteins to estimate a class-specific FDR among the noncanonical proteins themselves [24,63], some studies control confidence using a whole-proteome FDR (including both canonical and non-canonical). Setting a strict whole-proteome FDR does not guarantee a low FDR among inferred noncanonical detections. In this study, we found that, had we set a 1% whole-proteome FDR rather than controlling FDR among noncanonical proteins specifically, we would have produced a list of noncanonical protein detections comprised mostly of apparent false positives. This approach is made worse, moreover, when multiple datasets are analyzed independently, each using a 1% threshold, and then all hits are reported in a combined list. True detections are more likely to be shared between datasets than false positives, so the merged list will have a greater fraction of false positives than any of the individual dataset lists [26]. To the extent that these practices are common, the published literature may paint a misleading picture of the ease of detecting ribo-seq-supported noncanonical proteins. We believe that these issues can be addressed largely by following existing guidelines for FDR-based analyses and constructing adequate unbiased decoy sets. For example, the Human Proteome Project guidelines 3.0 state that, if multiple datasets are analyzed in a study, an FDR should be calculated on the combined dataset [64]. Directly comparing the distribution of confidence scores among predicted noncanonical proteins and their unbiased decoys among all datasets provides a clear picture of the extent to which noncanonical proteins can be genuinely detected.

How, then, can we use shotgun MS experiments to help us understand the biology of translated noncanonical ORFs and their potential protein products? We draw several lessons that may be applicable beyond yeast. For small-scale discovery of new protein-coding genes, the shotgun MS approach still provides value. Most noncanonical detections identified in this study were found on the basis of just 1 or 2 PSMs; additional support that these were genuine detections was provided from translation and evolution data. This suggests that further MS experiments conducted in a wide range of conditions will likely yield new discoveries of proteins that can be detected only rarely. To maximize these rare discoveries, it will be helpful to analyze MS data using different parameters, considering in particular a wide variety of post-translational modifications. Given the short length of most noncanonical proteins, and that some noncanonical proteins lack tryptic peptides suitable for detection, it will likely also be helpful to use multi-enzyme digests or alternatives to digestion to maximize the probability that each noncanonical protein has at least one detectable peptide [44]. However, we do not believe that these approaches alone will enable large-scale detection of noncanonical proteins such that shotgun MS will be useful for validating the presence (or absence) of most noncanonical proteins predicted by ribosome profiling experiments. As the vast majority of

noncanonical proteins are outside the window of length and expression level in which canonical proteins are typically detected, technical advances that substantially improve sensitivity for small, low-abundance proteins may be needed for shotgun MS to serve this purpose [22]. The 3 MS studies we examined here performed experimental enrichment of shorter and less abundant proteins, and further developments along these lines should facilitate broader noncanonical protein detection. We conclude that, while MS analysis of yeast ribo-seq-supported noncanonical ORFs has some utility, it also has major limitations: It misses noncanonical proteins likely to be of biological interest, including an entire class of translated element, the evolutionarily transient ORFs. Targeted techniques for protein detection, such as microscopy [65], western blot, and top-down proteomics [60], are more sensitive at detecting small proteins but lack the convenience of untargeted bottom-up MS in being able to readily search for unannotated proteins predicted from an entire genome, transcriptome, or translome of a species. New technological developments in MS, and future innovations such as protein sequencing [66], are needed to better assess the cellular presence and abundance of the great majority of proteins potentially encoded by the noncanonical translome.

Methods

Mass spectrometry search

All MS data files were taken from 3 studies. The He and colleagues [29] dataset PXD008586 and Gao and colleagues dataset PXD001928 were downloaded from PRIDE. The Sun and colleagues [31] dataset PXD028623 was downloaded from IPROX. These datasets were searched using all proteins predicted to be encoded from the full reference translome described in Wacholder and colleagues [7]. The sequence database was supplemented with all canonical proteins not included in the Wacholder and colleagues dataset. Canonical proteins are those annotated as “verified,” “uncharacterized,” or “transposable element” in the August 3, 2022 update of the SGD annotation [33].

Searches were conducted using the MSFragger program [32]. Unless otherwise indicated, the following parameters were used: 20 ppm precursor mass tolerance, 2 enzymatic termini required, up to 2 missed cleavages allowed, clipping of the N-terminal methionine as a variable modification, methionine oxidation as a variable modification, cysteine carbamidomethylation as fixed modification, peptide digestion lengths from 7 to 50 amino acids, peptide masses from 350 to 1,800 Da, a maximum fragment charge of 2. For the He and colleagues dataset and the Gao and colleagues dataset, fragment mass tolerance was set at 1 Da, while for the Sun and colleagues dataset fragment mass tolerance was set at 20 ppm; these settings reflect the instruments and settings used and were found to give the most canonical protein detections. Most experiments used trypsin as the digestive enzyme, but some of the experiments in Gao and colleagues were conducted using LysC; these experiments were analyzed using a separate parameter file setting LysC as the enzyme. After running MSFragger on each spectra file from the 3 studies, all output files, consisting of lists of PSMs and their properties, were concatenated together; analyses were done on PSMs pooled from all experiments.

Unless otherwise specified, FDR was calculated in a class-specific manner (i.e., specific to canonical or noncanonical ORFs) by dividing the number of decoy proteins within the class that were detected at the expect score threshold from the number of target proteins in the class detected at the threshold. A protein was considered detected at a given expect score threshold if had at least one unique PSM with an expect score below the threshold. Decoys were either default (reverse of protein database sequence) or reversed after the starting methionine, as indicated. Peptides were excluded if they belonged to more than one predicted protein. Peptides were also excluded from supporting noncanonical proteins if the exact peptide sequence

existed in a canonical protein, regardless of whether it would be a tryptic peptide of that protein. PSMs were excluded if the MSFragger hyperscore was less than 3 above the score for the next best peptide, in order to avoid using PSMs that did not uniquely support a single protein.

In 2 analyses, searches were instead conducted either using the MS-GF+ program [40] or MaxQuant [42]. All available parameters were set to be the same as in the MSFragger search, and decoys were reversed after the starting methionine. MS²Rescore [41] was then run on MS-GF+ output files to rescore the results.

Ribo-seq data

All ribo-seq data were taken from the analysis in Wacholder and colleagues [7]. These data included ribo-seq reads aggregated over 42 published studies and mapped to the *S. cerevisiae* genome. All reads are mapped to ribosome P-sites as described by Wacholder and colleagues. A read was considered to map to an ORF only if the inferred P-site mapped to the first position of a codon in the reading frame of the ORF. The total read count for an ORF is the sum of reads mapping over all first codon positions, and the translation rate is the read count divided by the number of codons in the ORF.

Homology analyses

BLAST analyses were conducted with default settings and a 10^{-4} e-value threshold to consider a match a homolog. BLAST searches conducted on NCBI databases were done on the NCBI website. Searches of the yeast genomes collected by Shen and colleagues [34] were conducted using the BLAST command line tool on the genomes and annotations taken from that study [67]. TBLASTN searches of *Saccharomyces* species genomes were conducted on genomes acquired from the following sources: *S. paradoxus* from Liti and colleagues [68], *S. arboricolus* from Liti and colleagues [69] (GCF_000292725.1), *S. jurei* from Naseeb and colleagues [70] (GCA_900290405.1), and *S. mikatae*, *S. uvarum*, *S. eubayanus*, and *S. kudriavzevii* from Scannell and colleagues [71]. These genome were also used to make sequence alignments. All sequence alignments were generated using the MAFFT tool on the European Bioinformatics Institute website [72].

Peptide analysis

To analyze the factors predicting MS detectability at the peptide level, a list of all possible tryptic peptides was constructed. For each ORF in the protein database, a set of possible peptides was constructed following the same rules as used for the MSFragger analysis: Two enzymatic termini (or protein ends) were required, up to 2 missed cleavages were allowed, clipping to the N-terminal methionine was a variable modification, and methionine oxidation was a variable modification. As in the MSFragger analysis, peptides were restricted to 7 to 50 amino acids and peptide masses from 350 to 1,800 Da. Out of this list of theoretical peptides, the peptides that were detected in the MS analysis at a 10^{-6} expect score threshold in at least one experiment were identified.

We used simulations to estimate the proportion of noncanonical proteins that would be detected if noncanonical peptides had the same detection probability as noncanonical proteins. Each simulation was conducted by randomly selecting noncanonical peptides at the canonical peptide detection rate and counting the proportion of noncanonical proteins with at least one selected peptide. The reported proportion is the average over 10 simulations.

Analyzing the effect of peptide sequence and transmembrane domains

Every tryptic peptide was assessed for estimated detectability using the AP3 algorithm [53]. Settings for peptide digestion were matched to that of the MS analysis, and the pretrained *S.*

cerevisiae model provided with the program was used for scoring. Peptides were binned by AP3 detectability score, with 10 intervals evenly spaced between 0 and 1, to construct Fig 7C and 7D. We also used these intervals to estimate the proportion of canonical peptides that would be detected if canonical peptides had the same distribution of detectability scores as noncanonical peptides. For each bin, the canonical peptide detection probability was estimated as the rate of canonical peptide detection (MSFragger expect score $<10^{-6}$) within the bin. We then took the expected value of canonical peptide detections if the frequency distribution of canonical peptides among bins matched that of noncanonical peptides and divided this count by the number of canonical peptides actually detected.

Every protein was assessed for transmembrane domains using TMHMM [54]. For each protein, the proportion of amino acids assigned by TMHMM to a transmembrane domain was calculated if at least one transmembrane helix was predicted; otherwise, the proportion was set at zero. To construct Fig 7D, proteins were binned by transmembrane proportion, with each bin covering an interval of 0.1, and each peptide was assigned to the same bin as its associated protein. The difference in distribution between canonical proteins and noncanonical proteins larger than 50 amino acids was assessed using a chi-squared test on a contingency table containing the counts of each class in each bin.

Supporting information

S1 Fig. Spectra supporting detection of noncanonical protein YFR035W-A. Two spectra with stronger MSFragger expect scores than all decoys are shown. At top, the full protein sequence is shown, with peptide coverage colored in red. Spectra were visualized using the Universal Spectrum Identifier (USI) tool on ProteomeExchange [73] for the USIs given in S1 Table. The data underlying this Figure can be found in S1 Data.
(PNG)

S2 Fig. Spectra supporting detection of noncanonical protein YMR106W-A. A single PSM (top left) had a stronger MSFragger expect score than all decoys, while 3 others had stronger scores than the next strongest decoy. At top, the full protein sequence is shown, with peptide coverage colored in red. Spectra were visualized using the Universal Spectrum Identifier (USI) tool on ProteomeExchange for the USIs given in S1 Table. The data underlying this Figure can be found in S1 Data.
(PNG)

S3 Fig. Spectrum supporting detection of noncanonical protein YIL059C. A single PSM had a stronger MSFragger expect score than all decoys when a single non-enzymatic end was allowed. At top, the full protein sequence is shown, with peptide coverage colored in red. The spectrum was visualized using the Universal Spectrum Identifier (USI) tool on ProteomeExchange for the USI given in S1 Table. The data underlying this Figure can be found in S1 Data.
(PNG)

S4 Fig. Claimed noncanonical detections in previous study have similar scores to decoys. For each protein and decoy passing the detection threshold in the Sun and colleagues [31] study, the strongest score among all PSMs associated with the protein or decoy is indicated. All scores and protein classifications were taken from output files of Sun and colleagues [31] downloaded from IRPOX (PXD028623); we combined all PSMs from 11 different output files to create the plot. Each output file contains the PSMs passing a 1% FDR threshold, set at the whole-proteome level (i.e., not distinguishing canonical from noncanonical), in analyses conducted by Sun and colleagues using pFind. Each output file was individually thresholded at a 1% FDR in the Sun and colleagues' analysis and noncanonical proteins passing this threshold

in any file were inferred to be detected. Lower scores indicate higher confidence given by the MS algorithm. The observation that decoys and claimed noncanonical detections have similar scores suggests that many claimed noncanonical detections (indicated in blue) may be false positives. Merging multiple lists of inferred detections that were each individually generated at a 1% FDR is expected to result in a combined list with a much higher FDR [26], which, together with the use of a proteome-wide rather than noncanonical-specific FDR, can help explain why many noncanonical proteins were inferred to be detected despite scoring similarly to decoys. The data underlying this Figure can be found in [S1 Data](#).

(PNG)

S5 Fig. Spectra supporting detection of noncanonical protein YNL155C-A. Spectra for the 4 strongest matches for YNL155C-A. At top, the full protein sequence is shown, with peptide coverage colored in red. The spectra were visualized using the Universal Spectrum Identifier (USI) tool on ProteomeExchange for the USIs given in [S1 Table](#). The data underlying this Figure can be found in [S1 Data](#).

(PNG)

S6 Fig. Very few noncanonical proteins have high-confidence PSMs. The best peptide-spectrum match MSFragger expect score for each noncanonical protein and decoy in the database. Lower scores indicate stronger matches. The data underlying this Figure can be found in [S1 Data](#).

(PNG)

S7 Fig. Translation rate declines with ORF size. (A) Average log in-frame ribo-seq read count per codon among canonical ORFs of different size classes. (B) Average log in-frame ribo-seq read count per codon among noncanonical ORFs of different size classes. The data underlying this Figure can be found in [S1 Data](#).

(PNG)

S8 Fig. Proteins with more transmembrane content are less detectable by MS. The proportion of peptides detected, among all eligible for detection, for canonical proteins binned by proportion of amino acids in predicted transmembrane domains. Predictions were made using TMHMM [54]. The first bin includes only proteins with no transmembrane domain predicted. The data underlying this Figure can be found in [S1 Data](#).

(PNG)

S9 Fig. Evolutionarily transient canonical proteins found at similar rates to decoys. Predicted proteins and decoys detected in MS data at a range of expect-score thresholds, among canonical proteins identified as evolutionarily transient by Wacholder and colleagues [7], using the standard MSFragger approach. The data underlying this Figure can be found in [S1 Data](#).

(PNG)

S1 Table. Peptides of noncanonical ORFs detected in mass spectrometry datasets.

(XLSX)

S1 Data. Data underlying Figs 1, 2, 3, 4, 5, 6, 7, S1, S2, S3, S4, S5, S6, S7, S8, and S9.

(XLSX)

Acknowledgments

We thank Jiwon Lee for helpful feedback.

Author Contributions

Conceptualization: Aaron Wacholder, Anne-Ruxandra Carvunis.

Data curation: Aaron Wacholder.

Formal analysis: Aaron Wacholder.

Funding acquisition: Anne-Ruxandra Carvunis.

Investigation: Aaron Wacholder.

Methodology: Aaron Wacholder, Anne-Ruxandra Carvunis.

Project administration: Anne-Ruxandra Carvunis.

Supervision: Anne-Ruxandra Carvunis.

Validation: Aaron Wacholder.

Visualization: Aaron Wacholder.

Writing – original draft: Aaron Wacholder.

Writing – review & editing: Aaron Wacholder, Anne-Ruxandra Carvunis.

References

1. Ingolia NT, Brar GA, Stern-Ginossar N, Harris MS, Talhouarne GJS, Jackson SE, et al. Ribosome Profiling Reveals Pervasive Translation Outside of Annotated Protein-Coding Genes. *Cell Rep.* 2014; 8:1365–1379. <https://doi.org/10.1016/j.celrep.2014.07.045> PMID: 25159147
2. Wright BW, Yi Z, Weissman JS, Chen J. The dark proteome: translation from noncanonical open reading frames. *Trends Cell Biol.* 2022; 32:243–258. <https://doi.org/10.1016/j.tcb.2021.10.010> PMID: 34844857
3. Jackson R, Kroehling L, Khitun A, Bailis W, Jarret A, York AG, et al. The translation of non-canonical open reading frames controls mucosal immunity. *Nature.* 2018; 564:434–438. <https://doi.org/10.1038/s41586-018-0794-7> PMID: 30542152
4. Pauli A, Norris ML, Valen E, Chew G-L, Gagnon JA, Zimmerman S, et al. Toddler: An Embryonic Signal That Promotes Cell Movement via Apelin Receptors. *Science.* 2014; 343:1248636. <https://doi.org/10.1126/science.1248636> PMID: 24407481
5. Herberg S, Gert KR, Schleiffer A, Pauli A. The Ly6/uPAR protein Bouncer is necessary and sufficient for species-specific fertilization. *Science.* 2018; 361:1029–1033. <https://doi.org/10.1126/science.aat7113> PMID: 30190407
6. Prensner JR, Enache OM, Luria V, Krug K, Clauser KR, Dempster JM, et al. Noncanonical open reading frames encode functional proteins essential for cancer cell survival. *Nat Biotechnol.* 2021; 39:697–704. <https://doi.org/10.1038/s41587-020-00806-2> PMID: 33510483
7. Wacholder A, Parikh SB, Coelho NC, Acar O, Houghton C, Chou L, et al. A vast evolutionarily transient translome contributes to phenotype and fitness. *Cell Syst.* 2023;S2405-4712(23):00086–00088. <https://doi.org/10.1016/j.cels.2023.04.002> PMID: 37164009
8. Durand É, Gagnon-Arsenault I, Hallin J, Hatin I, Dubé AK, Nielly-Thibault L, et al. Turnover of ribosome-associated transcripts from de novo ORFs produces gene-like characteristics available for de novo gene emergence in wild yeast populations. *Genome Res.* 2019; 29:932–943. <https://doi.org/10.1101/gr.239822.118> PMID: 31152050
9. Ruiz-Orera J, Verdaguer-Grau P, Villanueva-Cañas JL, Messeguer X, Albà MM. Translation of neutrally evolving peptides provides a basis for de novo gene evolution. *Nat Ecol Evol.* 2018; 2:890–896. <https://doi.org/10.1038/s41559-018-0506-6> PMID: 29556078
10. Mudge JM, Ruiz-Orera J, Prensner JR, Brunet MA, Calvet F, Jungreis I, et al. Standardized annotation of translated open reading frames. *Nat Biotechnol.* 2022; 40:994–999. <https://doi.org/10.1038/s41587-022-01369-0> PMID: 35831657
11. Makarewich CA, Olson EN. Mining for Micropeptides. *Trends Cell Biol.* 2017; 27:685–696. <https://doi.org/10.1016/j.tcb.2017.04.006> PMID: 28528987

12. Calviello L, Mukherjee N, Wyler E, Zauber H, Hirsekorn A, Selbach M, et al. Detecting actively translated open reading frames in ribosome profiling data. *Nat Methods*. 2016; 13:165–170. <https://doi.org/10.1038/nmeth.3688> PMID: 26657557
13. Chothani SP, Adami E, Widjaja AA, Langley SR, Viswanathan S, Pua CJ, et al. A high-resolution map of human RNA translation. *Mol Cell*. 2022; 82:2885–2899.e8. <https://doi.org/10.1016/j.molcel.2022.06.023> PMID: 35841888
14. Bazzini AA, Johnstone TG, Christiano R, Mackowiak SD, Obermayer B, Fleming ES, et al. Identification of small ORFs in vertebrates using ribosome footprinting and evolutionary conservation. *EMBO J*. 2014; 33:981–993. <https://doi.org/10.1002/embj.201488411> PMID: 24705786
15. Duffy EE, Finander B, Choi G, Carter AC, Pritisnac I, Alam A, et al. Developmental dynamics of RNA translation in the human brain. *Nat Neurosci*. 2022; 25:1353–1365. <https://doi.org/10.1038/s41593-022-01164-9> PMID: 36171426
16. Wolters DA, Washburn MP, Yates JR. An Automated Multidimensional Protein Identification Technology for Shotgun Proteomics. *Anal Chem*. 2001; 73:5683–5690. <https://doi.org/10.1021/ac010617e> PMID: 11774908
17. Ahrens CH, Wade JT, Champion MM, Langer JD. A Practical Guide to Small Protein Discovery and Characterization Using Mass Spectrometry. *J Bacteriol*. 2022; 204:e00353–e00321. <https://doi.org/10.1128/JB.00353-21> PMID: 34748388
18. Zheng EB, Zhao L. Protein evidence of unannotated ORFs in *Drosophila* reveals diversity in the evolution and properties of young proteins. Levine MT, editor. *eLife*. 2022; 11:e78772. <https://doi.org/10.7554/eLife.78772> PMID: 36178469
19. Ouspenskaia T, Law T, Clauser KR, Klaeger S, Sarkizova S, Aguet F, et al. Unannotated proteins expand the MHC-I-restricted immunopeptidome in cancer. *Nat Biotechnol*. 2022; 40:209–217. <https://doi.org/10.1038/s41587-021-01021-3> PMID: 34663921
20. Lu S, Zhang J, Lian X, Sun L, Meng K, Chen Y, et al. A hidden human proteome encoded by ‘non-coding’ genes. *Nucleic Acids Res*. 2019; 47:8111–8125. <https://doi.org/10.1093/nar/gkz646> PMID: 31340039
21. Bogaert A, Fijalkowska D, Staes A, Van de Steene T, Demol H, Gevaert K. Limited Evidence for Protein Products of Noncoding Transcripts in the HEK293T Cellular Cytosol. *Mol Cell Proteomics*. 2022; 21:100264. <https://doi.org/10.1016/j.mcpro.2022.100264> PMID: 35788065
22. Prensner JR, Abelin JG, Kok LW, Clauser KR, Mudge JM, Ruiz-Orera J, et al. What can Ribo-seq, immunopeptidomics, and proteomics tell us about the non-canonical proteome? *Mol Cell Proteomics*. 2023. <https://doi.org/10.1016/j.mcpro.2023.100631> PMID: 37572790
23. Elias JE, Gygi SP. Target-Decoy Search Strategy for Mass Spectrometry-Based Proteomics. In: Hubbard SJ, Jones AR, editors. *Proteome Bioinformatics*. Totowa, NJ: Humana Press; 2010. pp. 55–71. https://doi.org/10.1007/978-1-60761-444-9_5 PMID: 20013364
24. Nesvizhskii AI. Proteogenomics: concepts, applications and computational strategies. *Nat Methods*. 2014; 11:1114–1125. <https://doi.org/10.1038/nmeth.3144> PMID: 25357241
25. Omenn GS, Lane L, Lundberg EK, Beavis RC, Nesvizhskii AI, Deutsch EW. Metrics for the Human Proteome Project 2015: Progress on the Human Proteome and Guidelines for High-Confidence Protein Identification. *J Proteome Res*. 2015; 14:3452–3460. <https://doi.org/10.1021/acs.jproteome.5b00499> PMID: 26155816
26. Deutsch EW, Overall CM, Van Eyk JE, Baker MS, Paik Y-K, Weintraub ST, et al. Human Proteome Project Mass Spectrometry Data Interpretation Guidelines 2.1. *J Proteome Res*. 2016; 15:3961–3970. <https://doi.org/10.1021/acs.jproteome.6b00392> PMID: 27490519
27. Zhang Z, Burke M, Mirokhin YA, Tchekhovskoi DV, Markey SP, Yu W, et al. Reverse and Random Decoy Methods for False Discovery Rate Estimation in High Mass Accuracy Peptide Spectral Library Searches. *J Proteome Res*. 2018; 17:846–857. <https://doi.org/10.1021/acs.jproteome.7b00614> PMID: 29281288
28. Elias JE, Gygi SP. Target-decoy search strategy for increased confidence in large-scale protein identifications by mass spectrometry. *Nat Methods*. 2007; 4:207–214. <https://doi.org/10.1038/nmeth1019> PMID: 17327847
29. He C, Jia C, Zhang Y, Xu P. Enrichment-Based Proteogenomics Identifies Microproteins, Missing Proteins, and Novel smORFs in *Saccharomyces cerevisiae*. *J Proteome Res*. 2018; 17:2335–2344. <https://doi.org/10.1021/acs.jproteome.8b00032> PMID: 29897761
30. Gao Y, Ping L, Duong D, Zhang C, Dammer EB, Li Y, et al. Mass-Spectrometry-Based Near-Complete Draft of the *Saccharomyces cerevisiae* Proteome. *J Proteome Res*. 2021; 20:1328–1340. <https://doi.org/10.1021/acs.jproteome.0c00721> PMID: 33443437

31. Sun Y, Huang J, Wang Z, Pan N, Wan C. Identification of Microproteins in *Saccharomyces cerevisiae* under Different Stress Conditions. *J Proteome Res.* 2022; 21:1939–1947. <https://doi.org/10.1021/acs.jproteome.2c00212> PMID: 35838590
32. Kong AT, Leprevost FV, Avtonomov DM, Mellacheruvu D, Nesvizhskii AI. MSFragger: ultrafast and comprehensive peptide identification in mass spectrometry-based proteomics. *Nat Methods.* 2017; 14:513–520. <https://doi.org/10.1038/nmeth.4256> PMID: 28394336
33. Cherry JM, Hong EL, Amundsen C, Balakrishnan R, Binkley G, Chan ET, et al. *Saccharomyces Genome Database: the genomics resource of budding yeast.* *Nucleic Acids Res.* 2012; 40:D700–D705. <https://doi.org/10.1093/nar/gkr1029> PMID: 22110037
34. Shen X-X, Opulente DA, Kominek J, Zhou X, Steenwyk JL, Buh KV, et al. Tempo and Mode of Genome Evolution in the Budding Yeast Subphylum. *Cell.* 2018; 175:1533–1545.e20. <https://doi.org/10.1016/j.cell.2018.10.023> PMID: 30415838
35. Czaja W, Bensasson D, Ahn HW, Garfinkel DJ, Bergman CM. Evolution of Ty1 copy number control in yeast by horizontal transfer and recombination. *PLoS Genet.* 2020; 16:e1008632. <https://doi.org/10.1371/journal.pgen.1008632> PMID: 32084126
36. Cao X, Khitun A, Na Z, Dumitrescu DG, Kubica M, Olatunji E, et al. Comparative Proteomic Profiling of Unannotated Microproteins and Alternative Proteins in Human Cell Lines. *J Proteome Res.* 2020; 19:3418–3426. <https://doi.org/10.1021/acs.jproteome.0c00254> PMID: 32449352
37. Chu Q, Martinez TF, Novak SW, Donaldson CJ, Tan D, Vaughan JM, et al. Regulation of the ER stress response by a mitochondrial microprotein. *Nat Commun.* 2019; 10:4883. <https://doi.org/10.1038/s41467-019-12816-z> PMID: 31653868
38. Li D, Dong Y, Jiang Y, Jiang H, Cai J, Wang W. A de novo originated gene depresses budding yeast mating pathway and is repressed by the protein encoded by its antisense strand. *Cell Res.* 2010; 20:408–420. <https://doi.org/10.1038/cr.2010.31> PMID: 20195295
39. Willingham S, Outeiro TF, DeVit MJ, Lindquist SL, Muchowski PJ. Yeast Genes That Enhance the Toxicity of a Mutant Huntingtin Fragment or α -Synuclein. *Science.* 2003; 302:1769–1772. <https://doi.org/10.1126/science.1090389> PMID: 14657499
40. Kim S, Pevzner PA. MS-GF+ makes progress towards a universal database search tool for proteomics. *Nat Commun.* 2014; 5:5277. <https://doi.org/10.1038/ncomms6277> PMID: 25358478
41. Declercq A, Bouwmeester R, Hirschler A, Carapito C, Degroevae S, Martens L, et al. MS2Rescore: Data-Driven Rescoring Dramatically Boosts Immunopeptide Identification Rates. *Mol Cell Proteomics.* 2022; 21. <https://doi.org/10.1016/j.mcpro.2022.100266> PMID: 35803561
42. Tyanova S, Temu T, Cox J. The MaxQuant computational platform for mass spectrometry-based shotgun proteomics. *Nat Protoc.* 2016; 11:2301–2319. <https://doi.org/10.1038/nprot.2016.136> PMID: 27809316
43. Cox J, Neuhauser N, Michalski A, Scheltema RA, Olsen JV, Mann M. Andromeda: A Peptide Search Engine Integrated into the MaxQuant Environment. *J Proteome Res.* 2011; 10:1794–1805. <https://doi.org/10.1021/pr101065j> PMID: 21254760
44. Kaulich PT, Cassidy L, Bartel J, Schmitz RA, Tholey A. Multi-protease Approach for the Improved Identification and Molecular Characterization of Small Proteins and Short Open Reading Frame-Encoded Peptides. *J Proteome Res.* 2021; 20:2895–2903. <https://doi.org/10.1021/acs.jproteome.1c00115> PMID: 33760615
45. Cassidy L, Kaulich PT, Maaß S, Bartel J, Becher D, Tholey A. Bottom-up and top-down proteomic approaches for the identification, characterization, and quantification of the low molecular weight proteome with focus on short open reading frame-encoded peptides. *Proteomics.* 2021; 21:2100008. <https://doi.org/10.1002/pmic.202100008> PMID: 34145981
46. Cardon T, Salzet M, Franck J, Fournier I. Nuclei of HeLa cells interactomes unravel a network of ghost proteins involved in proteins translation. *Biochim Biophys Acta Gen Subj.* 2019; 1863:1458–1470. <https://doi.org/10.1016/j.bbagen.2019.05.009> PMID: 31128158
47. Herst PM, Perrone GG, Dawes IW, Bircham PW, Berridge MV. Plasma membrane electron transport in *Saccharomyces cerevisiae* depends on the presence of mitochondrial respiratory subunits. *FEMS Yeast Res.* 2008; 8:897–905. <https://doi.org/10.1111/j.1567-1364.2008.00418.x> PMID: 18657191
48. Wilson WA, Wang Z, Roach PJ. Systematic Identification of the Genes Affecting Glycogen Storage in the Yeast *Saccharomyces cerevisiae*: Implication of the Vacuole as a Determinant of Glycogen Level * S. *Mol Cell Proteomics.* 2002; 1:232–242. <https://doi.org/10.1074/mcp.M100024-MCP200> PMID: 12096123
49. Hoepfner D, Helliwell SB, Sadlish H, Schuierer S, Filipuzzi I, Brachat S, et al. High-resolution chemical dissection of a model eukaryote reveals targets, pathways and gene functions. *Microbiol Res.* 2014; 169:107–120. <https://doi.org/10.1016/j.micres.2013.11.004> PMID: 24360837

50. Armenteros JJA, Salvatore M, Emanuelsson O, Winther O, Heijne G von, Elofsson A, et al. Detecting sequence signals in targeting peptides using deep learning. *Life Sci Alliance*. 2019;2. <https://doi.org/10.26508/lsa.201900429> PMID: 31570514
51. Bergeron D, Lapointe C, Bissonnette C, Tremblay G, Motard J, Roucou X. An Out-of-frame Overlapping Reading Frame in the Ataxin-1 Coding Sequence Encodes a Novel Ataxin-1 Interacting Protein*. *J Biol Chem*. 2013; 288:21824–21835. <https://doi.org/10.1074/jbc.M113.472654> PMID: 23760502
52. Jarnuczak AF, Lee DCH, Lawless C, Holman SW, Evers CE, Hubbard SJ. Analysis of Intrinsic Peptide Detectability via Integrated Label-Free and SRM-Based Absolute Quantitative Proteomics. *J Proteome Res*. 2016; 15:2945–2959. <https://doi.org/10.1021/acs.jproteome.6b00048> PMID: 27454336
53. Gao Z, Chang C, Yang J, Zhu Y, Fu Y. AP3: An Advanced Proteotypic Peptide Predictor for Targeted Proteomics by Incorporating Peptide Digestibility. *Anal Chem*. 2019; 91:8705–8711. <https://doi.org/10.1021/acs.analchem.9b02520> PMID: 31247716
54. Krogh A, Larsson B, von Heijne G, Sonnhammer ELL. Predicting transmembrane protein topology with a hidden markov model: application to complete genomes¹ Edited by F. Cohen. *J Mol Biol*. 2001; 305:567–580. <https://doi.org/10.1006/jmbi.2000.4315> PMID: 11152613
55. Wu CC, Yates JR. The application of mass spectrometry to membrane proteomics. *Nat Biotechnol*. 2003; 21:262–267. <https://doi.org/10.1038/nbt0303-262> PMID: 12610573
56. Vakirlis N, Acar O, Hsu B, Castilho Coelho N, Van Oss SB, Wacholder A, et al. De novo emergence of adaptive membrane proteins from thymine-rich genomic sequences. *Nat Commun*. 2020; 11:781. <https://doi.org/10.1038/s41467-020-14500-z> PMID: 32034123
57. Omid K, Jessulat M, Hooshyar M, Burnside D, Schoenrock A, Kazmirchuk T, et al. Uncharacterized ORF HUR1 influences the efficiency of non-homologous end-joining repair in *Saccharomyces cerevisiae*. *Gene*. 2018; 639:128–136. <https://doi.org/10.1016/j.gene.2017.10.003> PMID: 28987344
58. Hajikarimlou M, Moteshareie H, Omid K, Hooshyar M, Shaikho S, Kazmirchuk T, et al. Sensitivity of yeast to lithium chloride connects the activity of YTA6 and YPR096C to translation of structured mRNAs. *PLoS ONE*. 2020; 15:e0235033. <https://doi.org/10.1371/journal.pone.0235033> PMID: 32639961
59. Alesso CA, Discola KF, Monteiro G. The gene ICS3 from the yeast *Saccharomyces cerevisiae* is involved in copper homeostasis dependent on extracellular pH. *Fungal Genet Biol*. 2015; 82:43–50. <https://doi.org/10.1016/j.fgb.2015.06.007> PMID: 26127016
60. van Heesch S, Witte F, Schneider-Lunitz V, Schulz JF, Adami E, Faber AB, et al. The Translational Landscape of the Human Heart. *Cell*. 2019; 178:242–260.e29. <https://doi.org/10.1016/j.cell.2019.05.010> PMID: 31155234
61. Wang S, Tian L, Liu H, Li X, Zhang J, Chen X, et al. Large-Scale Discovery of Non-conventional Peptides in Maize and Arabidopsis through an Integrated Peptidogenomic Pipeline. *Mol Plant*. 2020; 13:1078–1093. <https://doi.org/10.1016/j.molp.2020.05.012> PMID: 32445888
62. Budamgunta H, Olexiuk V, Luyten W, Schildermans K, Maes E, Boonen K, et al. Comprehensive Peptide Analysis of Mouse Brain Striatum Identifies Novel sORF-Encoded Polypeptides. *Proteomics*. 2018; 18:1700218. <https://doi.org/10.1002/pmic.201700218> PMID: 29710410
63. Woo S, Cha SW, Bonissone S, Na S, Tabb DL, Pevzner PA, et al. Advanced Proteogenomic Analysis Reveals Multiple Peptide Mutations and Complex Immunoglobulin Peptides in Colon Cancer. *J Proteome Res*. 2015; 14:3555–3567. <https://doi.org/10.1021/acs.jproteome.5b00264> PMID: 26139413
64. Deutsch EW, Lane L, Overall CM, Bandeira N, Baker MS, Pineau C, et al. Human Proteome Project Mass Spectrometry Data Interpretation Guidelines 3.0. *J Proteome Res*. 2019; 18:4108–4116. <https://doi.org/10.1021/acs.jproteome.9b00542> PMID: 31599596
65. Yofe I, Weill U, Meurer M, Chuartzman S, Zalckvar E, Goldman O, et al. One library to make them all: streamlining the creation of yeast libraries via a SWAp-Tag strategy. *Nat Methods*. 2016; 13:371–378. <https://doi.org/10.1038/nmeth.3795> PMID: 26928762
66. Floyd BM, Marcotte EM. Protein Sequencing, One Molecule at a Time. *Annu Rev Biophys*. 2022; 51:181–200. <https://doi.org/10.1146/annurev-biophys-102121-103615> PMID: 34985940
67. Ye J, McGinnis S, Madden TL. BLAST: improvements for better sequence analysis. *Nucleic Acids Res*. 2006; 34:W6–W9. <https://doi.org/10.1093/nar/gkl164> PMID: 16845079
68. Liti G, Carter DM, Moses AM, Warringer J, Parts L, James SA, et al. Population genomics of domestic and wild yeasts. *Nature*. 2009; 458:337–341. <https://doi.org/10.1038/nature07743> PMID: 19212322
69. Liti G, Ba ANN, Blythe M, Müller CA, Bergström A, Cubillos FA, et al. High quality de novo sequencing and assembly of the *Saccharomyces arboricolus* genome. *BMC Genomics*. 2013; 14:69. <https://doi.org/10.1186/1471-2164-14-69> PMID: 23368932
70. Naseeb S, Alsammar H, Burgis T, Donaldson I, Knyazev N, Knight C, et al. Whole Genome Sequencing, de Novo Assembly and Phenotypic Profiling for the New Budding Yeast Species *Saccharomyces*

- jurei. *G3 Genes Genomes Genet.* 2018; 8:2967–2977. <https://doi.org/10.1534/g3.118.200476> PMID: 30097472
71. Scannell DR, Zill OA, Rokas A, Payen C, Dunham MJ, Eisen MB, et al. The Awesome Power of Yeast Evolutionary Genetics: New Genome Sequences and Strain Resources for the *Saccharomyces sensu stricto* Genus. *G3 Genes Genomes Genet.* 2011; 1:11–25. <https://doi.org/10.1534/g3.111.000273> PMID: 22384314
 72. Li W, Cowley A, Uludag M, Gur T, McWilliam H, Squizzato S, et al. The EMBL-EBI bioinformatics web and programmatic tools framework. *Nucleic Acids Res.* 2015; 43:W580–W584. <https://doi.org/10.1093/nar/gkv279> PMID: 25845596
 73. Deutsch EW, Bandeira N, Perez-Riverol Y, Sharma V, Carver JJ, Mendoza L, et al. The ProteomeX-change consortium at 10 years: 2023 update. *Nucleic Acids Res.* 2023; 51:D1539–D1548. <https://doi.org/10.1093/nar/gkac1040> PMID: 36370099